

For Research Use Only

# OPN1SW Polyclonal antibody

Catalog Number: 24660-1-AP



## Basic Information

<b>Catalog Number:</b> 24660-1-AP	<b>GenBank Accession Number:</b> BC156719	<b>Purification Method:</b> Antigen affinity purification
<b>Concentration:</b> 350 ug/ml	<b>GeneID (NCBI):</b> 611	<b>Recommended Dilutions:</b> IHC 1:50-1:500 IF-P 1:50-1:500
<b>Source:</b> Rabbit	<b>UNIPROT ID:</b> P03999	
<b>Isotype:</b> IgG	<b>Full Name:</b> opsin 1 (cone pigments), short-wave-sensitive	
<b>Immunogen Catalog Number:</b> AG20387	<b>Calculated MW:</b> 348 aa, 39 kDa	

## Applications

<b>Tested Applications:</b> IHC, IF-P, ELISA	<b>Positive Controls:</b>
<b>Species Specificity:</b> human, mouse	<b>IHC :</b> mouse eye tissue, <b>IF-P :</b> mouse eye tissue,
<b>Note-IHC:</b> suggested antigen retrieval with <b>TE buffer pH 9.0; (*) Alternatively, antigen retrieval may be performed with citrate buffer pH 6.0</b>	

## Background Information

OPN1SW (Short-wave-sensitive opsin 1) belongs to the G-protein coupled receptor 1 family, opsin subfamily. It's one of three types of cone photoreceptors responsible for normal color vision. Inherited tritan color vision deficiencies exhibit an autosomal dominant inheritance pattern and are caused by mutations in OPN1SW (PMID: 32400513).

## Storage

**Storage:**  
Store at -20°C. Stable for one year after shipment.  
**Storage Buffer:**  
PBS with 0.02% sodium azide and 50% glycerol  
Aliquoting is unnecessary for -20°C storage

For technical support and original validation data for this product please contact:

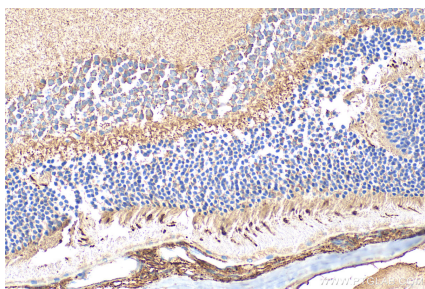
T: 4006900926

E: [Proteintech-CN@ptglab.com](mailto:Proteintech-CN@ptglab.com)

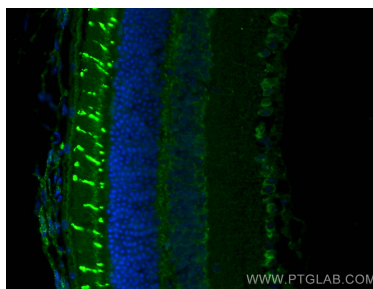
W: [ptgcn.com](http://ptgcn.com)

This product is exclusively available under Proteintech Group brand and is not available to purchase from any other manufacturer.

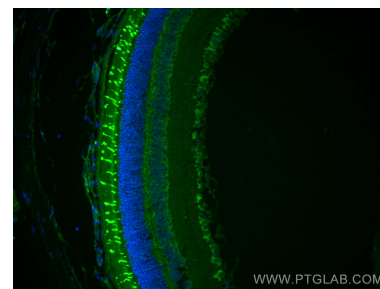
## Selected Validation Data



Immunohistochemical analysis of paraffin-embedded mouse eye tissue slide using 24660-1-AP (OPN1SW antibody) at dilution of 1:200 (under 40x lens). Heat mediated antigen retrieval with Tris-EDTA buffer (pH 9.0).



Immunofluorescent analysis of (4% PFA) fixed mouse eye tissue using OPN1SW antibody (24660-1-AP) at dilution of 1:200 and CoraLite® 488-Conjugated AffiniPure Goat Anti-Rabbit IgG(H+L).



Immunofluorescent analysis of (4% PFA) fixed mouse eye tissue using OPN1SW antibody (24660-1-AP) at dilution of 1:200 and CoraLite® 488-Conjugated AffiniPure Goat Anti-Rabbit IgG(H+L).