

For Research Use Only

SGLT2 Polyclonal antibody

Catalog Number: 24654-1-AP

Featured Product

39 Publications



Basic Information

Catalog Number:

24654-1-AP

Concentration:

300 ug/ml

Source:

Rabbit

Isotype:

IgG

Immunogen Catalog Number:

AG19163

GenBank Accession Number:

BC131542

GeneID (NCBI):

6524

UNIPROT ID:

P31639

Full Name:

solute carrier family 5
(sodium/glucose cotransporter),
member 2

Calculated MW:

672 aa, 73 kDa

Observed MW:

69-70 kDa

Purification Method:

Antigen affinity purification

Recommended Dilutions:

WB 1:500-1:3000

IHC 1:200-1:800

IF-P 1:50-1:500

Applications

Tested Applications:

WB, IHC, IF-P, ELISA

Cited Applications:

WB, IHC, IF, IP

Species Specificity:

human, mouse, rat

Cited Species:

human, mouse, rat

Positive Controls:

WB : mouse kidney tissue, A549 cells, 37°C incubated
mouse kidney, rat kidney tissue

IHC : human kidney tissue, rat kidney tissue

IF-P : mouse kidney tissue,

**Note-IHC: suggested antigen retrieval with
TE buffer pH 9.0; (*) Alternatively, antigen
retrieval may be performed with citrate
buffer pH 6.0**

Background Information

Sodium-glucose cotransporter 2 (SGLT2), encoded by SLC5A2, utilizes the electrochemical sodium gradient to transport glucose against the cell's internal concentration gradient. Mainly expressed on brush border membrane (BBM) of epithelial cells in the early segment of the proximal tubule, SGLT2 mediates most of the glucose reabsorption by the kidney overall. Inhibition of SGLT2 could improve glucose homeostasis of diabetic patients, which has been considered as a novel strategy for diabetes treatment.

Notable Publications

Author	Pubmed ID	Journal	Application
Dan Nakano	36131166	Med Mol Morphol	WB, IHC
Nunzia D'Onofrio	34500107	Mol Metab	WB
Mary Taub	36133305	Front Endocrinol (Lausanne)	WB

Storage

Storage:

Store at -20°C. Stable for one year after shipment.

Storage Buffer:

PBS with 0.02% sodium azide and 50% glycerol pH 7.3.

Aliquoting is unnecessary for -20°C storage

For technical support and original validation data for this product please contact:

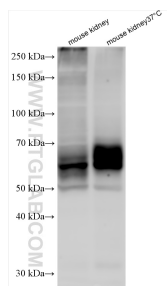
T: 4006900926

E: Proteintech-CN@ptglab.com

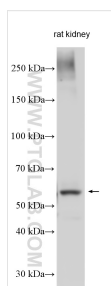
W: ptgcn.com

This product is exclusively available under Proteintech Group brand and is not available to purchase from any other manufacturer.

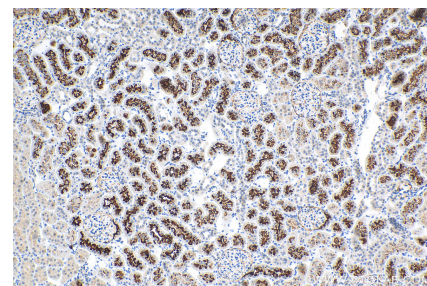
Selected Validation Data



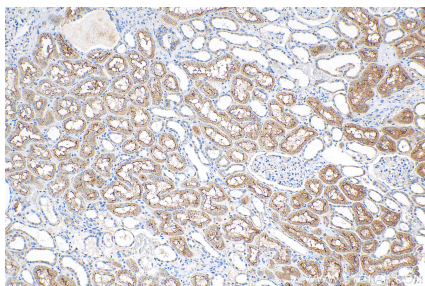
Various lysates were subjected to SDS PAGE followed by western blot with 24654-1-AP (SGLT2 antibody) at dilution of 1:1500 incubated at room temperature for 1.5 hours.



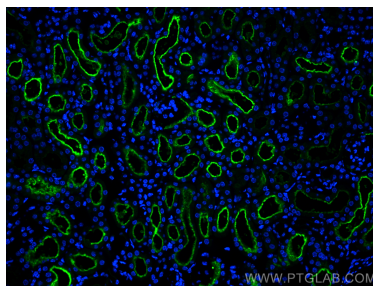
Rat kidney tissue was subjected to SDS PAGE followed by western blot with 24654-1-AP (SGLT2 antibody) at dilution of 1:1500 incubated at room temperature for 1.5 hours.



Immunohistochemical analysis of paraffin-embedded rat kidney tissue slide using 24654-1-AP (SGLT2 antibody) at dilution of 1:400 (under 10x lens). Heat mediated antigen retrieval with Tris-EDTA buffer (pH 9.0).



Immunohistochemical analysis of paraffin-embedded human kidney tissue slide using 24654-1-AP (SGLT2 antibody) at dilution of 1:400 (under 10x lens). Heat mediated antigen retrieval with Tris-EDTA buffer (pH 9.0).



Immunofluorescent analysis of (4% PFA) fixed paraffin-embedded mouse kidney tissue using SGLT2 antibody (24654-1-AP) at dilution of 1:200 and CoraLite® 488-Conjugated Goat Anti-Rabbit IgG(H+L) (SA00013-2). Heat mediated antigen retrieval with Tris-EDTA buffer (pH 9.0).