

For Research Use Only

# SORBS2 Polyclonal antibody, PBS Only

Catalog Number: 24643-1-PBS

Featured Product



## Basic Information

Catalog Number:

24643-1-PBS

Source:

Rabbit

Isotype:

IgG

Immunogen Catalog Number:

AG20041

GenBank Accession Number:

BC011883

GeneID (NCBI):

8470

UNIPROT ID:

O94875

Full Name:

sorbin and SH3 domain containing 2

Calculated MW:

1100 aa, 124 kDa

Observed MW:

70-75 kDa

Purification Method:

Antigen affinity purification

## Applications

Tested Applications:

WB, IHC, IF/ICC, IP, Indirect ELISA

Species Specificity:

human, mouse, canine

## Background Information

SORBS2, also known as ARGBP2, has three C-terminal SH3 domains and an N-terminal sorbin homology (SoHo) domain that interacts with lipid raft proteins. SORBS2 is widely expressed in human tissues and extremely abundant in the heart. In epithelial cells SORBS2 is located in stress fibers and the nucleus; In cardiac muscle cells. SORBS2 is located in the Z-disks of sarcomeres. The subcellular localization suggests that SORBS2 functions as an adapter protein to assemble signaling complexes in stress fibers, and may influence the contractile or elastic properties of cardiac sarcomeres (PMID: 9211900). Alternate splicing results in multiple transcript variants (PMID: 28961272).

## Storage

Storage:

Store at -80°C.

The product is shipped with ice packs. Upon receipt, store it immediately at -80°C

Storage Buffer:

PBS only, pH7.3

For technical support and original validation data for this product please contact:

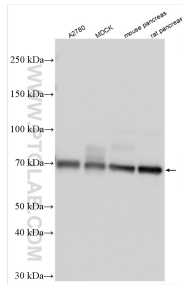
T: 4006900926

E: [Proteintech-CN@ptglab.com](mailto:Proteintech-CN@ptglab.com)

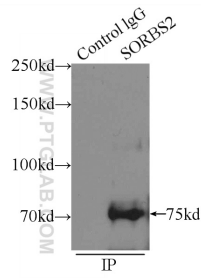
W: [ptgcn.com](http://ptgcn.com)

This product is exclusively available under Proteintech Group brand and is not available to purchase from any other manufacturer.

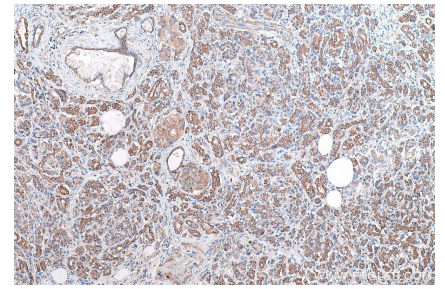
## Selected Validation Data



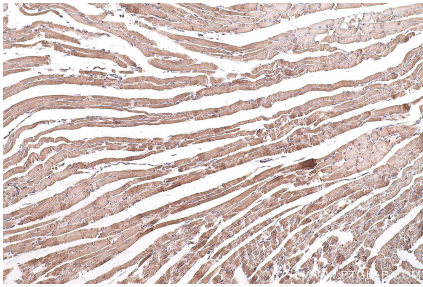
Various lysates were subjected to SDS PAGE followed by western blot with 24643-1-AP (SORBS2 antibody) at dilution of 1:3000 incubated at room temperature for 1.5 hours. This data was developed using the same antibody clone with 24643-1-PBS in a different storage buffer formulation.



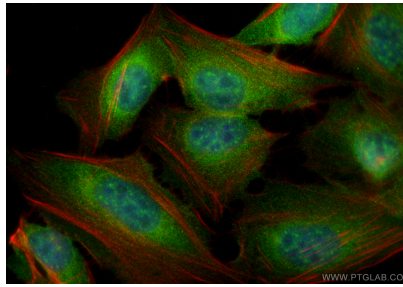
IP result of anti-SORBS2 (IP:24643-1-AP, 4ug; Detection:24643-1-AP 1:500) with mouse heart tissue lysate 4000ug. This data was developed using the same antibody clone with 24643-1-PBS in a different storage buffer formulation.



Immunohistochemical analysis of paraffin-embedded human pancreas cancer tissue slide using 24643-1-AP (SORBS2 antibody) at dilution of 1:500 (under 10x lens). Heat mediated antigen retrieval with Tris-EDTA buffer (pH 9.0). This data was developed using the same antibody clone with 24643-1-PBS in a different storage buffer formulation.



Immunohistochemical analysis of paraffin-embedded mouse heart tissue slide using 24643-1-AP (SORBS2 antibody) at dilution of 1:500 (under 10x lens). Heat mediated antigen retrieval with Tris-EDTA buffer (pH 9.0). This data was developed using the same antibody clone with 24643-1-PBS in a different storage buffer formulation.



Immunofluorescent analysis of (4% PFA) fixed U2OS cells using SORBS2 antibody (24643-1-AP) at dilution of 1:400 and CoraLite@488-Conjugated Goat Anti-Rabbit IgG(H+L) (SA00013-2), CL594-Phalloidin (red). This data was developed using the same antibody clone with 24643-1-PBS in a different storage buffer formulation.