

For Research Use Only

TMPRSS11D Polyclonal antibody

Catalog Number: 24634-1-AP



Basic Information

Catalog Number: 24634-1-AP	GenBank Accession Number: BC125195	Purification Method: Antigen affinity purification
Source: Rabbit	GeneID (NCBI): 9407	Recommended Dilutions: WB: 1:1000-1:4000
Isotype: IgG	UNIPROT ID: O60235	
Immunogen Catalog Number: AG17841	Full Name: transmembrane protease, serine 11D	
	Calculated MW: 418 aa, 46 kDa	
	Observed MW: 46 kDa	

Applications

Tested Applications: WB, ELISA	Positive Controls: WB : A-253 cells,
Species Specificity: human	

Background Information

TMPRSS11D, also known as human airway trypsin-like protease (HAT), is a type II transmembrane serine protease that plays a crucial role in various biological processes, including viral infections and cancer progression. This protease is expressed in the epithelial cells of the respiratory tract and has been implicated in the activation of several viruses, such as SARS-CoV-2. In addition to its role in viral infections, TMPRSS11D has also been involved in cancer progression. High expression levels of TMPRSS11D have been associated with poor overall survival in non-small cell lung cancer. This suggests that TMPRSS11D may contribute to tumor growth and metastasis, making it a potential biomarker and therapeutic target in oncology. (PMID: 28086212, PMID: 40348740)

Storage

Storage:
Store at -20°C. Stable for one year after shipment.
Storage Buffer:
PBS with 0.02% sodium azide and 50% glycerol, pH7.3
Aliquoting is unnecessary for -20°C storage

For technical support and original validation data for this product please contact:

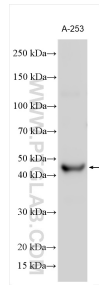
T: 4006900926

E: Proteintech-CN@ptglab.com

W: ptgcn.com

This product is exclusively available under Proteintech Group brand and is not available to purchase from any other manufacturer.

Selected Validation Data



A-253 cells were subjected to SDS PAGE followed by western blot with 24634-1-AP (TMPRSS11D antibody) at dilution of 1:2000 incubated at room temperature for 1.5 hours.