

For Research Use Only

# LY6G5C Polyclonal antibody

Catalog Number: 24633-1-AP **1 Publications**



## Basic Information

**Catalog Number:**

24633-1-AP

**Size:**

350 µg/ml

**Source:**

Rabbit

**Isotype:**

IgG

**Immunogen Catalog Number:**

AG18812

**GenBank Accession Number:**

BC141637

**GeneID (NCBI):**

80741

**UNIPROT ID:**

Q5SRR4

**Full Name:**

lymphocyte antigen 6 complex, locus

G5C

**Calculated MW:**

150 aa, 17 kDa

**Observed MW:**

16 kDa, 32 kDa, 64 kDa

**Purification Method:**

Antigen affinity purification

**Recommended Dilutions:**

WB 1:200-1:1000

IP 0.5-4.0 µg for 1.0-3.0 mg of total protein lysate

## Applications

**Tested Applications:**

IP, WB, ELISA

**Cited Applications:**

IF

**Species Specificity:**

human, mouse

**Cited Species:**

mouse

**Positive Controls:**

WB: mouse spleen tissue,

IP: K-562 cells,

## Background Information

LY6G5C, also known as C6orf20, is a low abundance secreted protein. The function of LY6G5C, remains largely unknown. It may have a role in hematopoietic cell differentiation. Catalog# 11714-1-AP can detect the protein and its dimer and tetramer.

## Notable Publications

| Author        | Pubmed ID | Journal      | Application |
|---------------|-----------|--------------|-------------|
| Maria Razzoli | 32192914  | EBioMedicine | IF          |

## Storage

**Storage:**

Store at -20°C. Stable for one year after shipment.

**Storage Buffer:**

PBS with 0.02% sodium azide and 50% glycerol pH 7.3.

Aliquoting is unnecessary for -20°C storage

For technical support and original validation data for this product please contact:

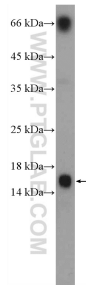
T: 4006900926

E: [Proteintech-CN@ptglab.com](mailto:Proteintech-CN@ptglab.com)

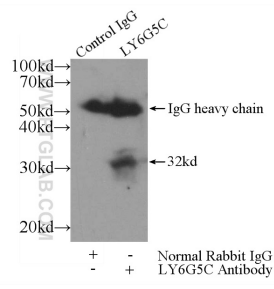
W: [ptgcn.com](http://ptgcn.com)

**This product is exclusively available under Proteintech Group brand and is not available to purchase from any other manufacturer.**

## Selected Validation Data



mouse spleen tissue were subjected to SDS PAGE followed by western blot with 24633-1-AP (LY6G5C Antibody) at dilution of 1:100 incubated at room temperature for 1.5 hours.



IP result of anti-LY6G5C (IP:24633-1-AP, 4ug; Detection:24633-1-AP 1:300) with K-562 cells lysate 1720ug.