

# PHF2 Polyclonal antibody

Catalog Number: 24624-1-AP

1 Publications

## Basic Information

## Catalog Number:

24624-1-AP

## Size:

700 µg/ml

## Source:

Rabbit

## Isotype:

IgG

## Immunogen Catalog Number:

AG20257

## GenBank Accession Number:

BC152437

## GeneID (NCBI):

5253

## UNIPROT ID:

O75151

## Full Name:

PHD finger protein 2

## Calculated MW:

1101 aa, 121 kDa

## Observed MW:

150 kDa

## Purification Method:

Antigen affinity purification

## Recommended Dilutions:

WB 1:200-1:1000

IP 0.5-4.0 µg for 1.0-3.0 mg of total protein lysate

IHC 1:20-1:200

## Applications

## Tested Applications:

IHC, IP, WB, ELISA

## Cited Applications:

WB

## Species Specificity:

human

## Cited Species:

human

**Note-IHC: suggested antigen retrieval with TE buffer pH 9.0; (\*) Alternatively, antigen retrieval may be performed with citrate buffer pH 6.0**

## Positive Controls:

WB : Jurkat cells,

IP : HeLa cells,

IHC : human cervical cancer tissue,

## Background Information

PHD finger protein 2 (PHF2), also known as JHDM1E (Jumonji C domain-containing histone demethylase 1E) or GRC5, is a 1101 amino acid protein, which contains one JmjC domain and one PHD-type zinc finger. PHF2 belongs to the JHDM1 histone demethylase family and localizes in the nucleus. PHF2 demethylates both histones and non-histone proteins. PHF2 is widely expressed in various tissues and exists as two alternative splicing isoforms. The gene encoding PHF2 lies in the candidate region for hereditary sensory neuropathy type I (HSN1), a disorder characterized by sensory dysfunction

## Notable Publications

Author	Pubmed ID	Journal	Application
Tong-Min Wang	37352861	Am J Hum Genet	WB

## Storage

## Storage:

Store at -20°C. Stable for one year after shipment.

## Storage Buffer:

PBS with 0.02% sodium azide and 50% glycerol pH 7.3.

Aliquoting is unnecessary for -20°C storage

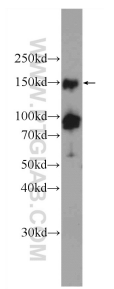
For technical support and original validation data for this product please contact:

T: 4006900926

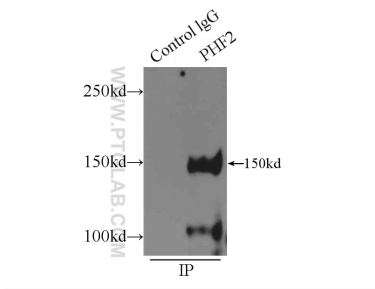
E: [Proteintech-CN@ptglab.com](mailto:Proteintech-CN@ptglab.com)W: [ptgcn.com](http://ptgcn.com)

**This product is exclusively available under Proteintech Group brand and is not available to purchase from any other manufacturer.**

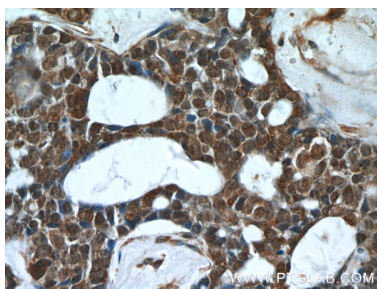
Selected Validation Data



Jurkat cells were subjected to SDS PAGE followed by western blot with 24624-1-AP (PHF2 Antibody) at dilution of 1:300 incubated at room temperature for 1.5 hours.



IP result of anti-PHF2 (IP:24624-1-AP, 4ug; Detection:24624-1-AP 1:500) with HeLa cells lysate 1800ug.



Immunohistochemical analysis of paraffin-embedded human cervical cancer tissue slide using 24624-1-AP (PHF2 Antibody) at dilution of 1:50 (under 40x lens).