

MBNL3 Polyclonal antibody

Catalog Number: 24610-1-AP

1 Publications

Basic Information

Catalog Number:

24610-1-AP

Size:

400 µg/ml

Source:

Rabbit

Isotype:

IgG

Immunogen Catalog Number:

AG20113

GenBank Accession Number:

BC042090

GeneID (NCBI):

55796

UNIPROT ID:

Q9NUKO

Full Name:

muscleblind-like 3 (Drosophila)

Calculated MW:

354 aa, 39 kDa

Observed MW:

38 kDa

Purification Method:

Antigen affinity purification

Recommended Dilutions:

WB 1:500-1:1000

IHC 1:20-1:200

Applications

Tested Applications:

IHC, WB, ELISA

Cited Applications:

WB

Species Specificity:

human, mouse

Cited Species:

human

Note-IHC: suggested antigen retrieval with TE buffer pH 9.0; (*) Alternatively, antigen retrieval may be performed with citrate buffer pH 6.0

Positive Controls:

WB : mouse skeletal muscle tissue,

IHC : human skeletal muscle tissue,

Background Information

MBNL3, also named as Muscleblind-like protein 3 or Cys3His CCG1-required protein, is a 354 amino acid protein, which contains four C3H1-type zinc fingers and belongs to the muscleblind family. MBNL3 localizes in the nucleus and is highly expressed in the placenta. MBNL3 mediates pre-mRNA alternative splicing regulation and plays a role in myotonic dystrophy pathophysiology. MBNL3 could inhibit terminal muscle differentiation, acting at approximately the time of myogenin induction.

Notable Publications

Author	Pubmed ID	Journal	Application
Daniel J Foster	32816599	Cell Cycle	WB

Storage

Storage:

Store at -20°C. Stable for one year after shipment.

Storage Buffer:

PBS with 0.02% sodium azide and 50% glycerol pH 7.3.

Aliquoting is unnecessary for -20°C storage

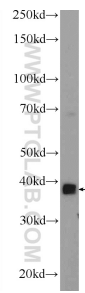
For technical support and original validation data for this product please contact:

T: 4006900926

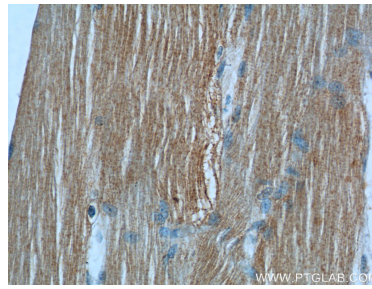
E: Proteintech-CN@ptglab.comW: ptgcn.com

This product is exclusively available under Proteintech Group brand and is not available to purchase from any other manufacturer.

Selected Validation Data



mouse skeletal muscle tissue were subjected to SDS PAGE followed by western blot with 24610-1-AP (MBNL3 Antibody) at dilution of 1:600 incubated at 4 degree celsius over night.



Immunohistochemical analysis of paraffin-embedded human skeletal muscle tissue slide using 24610-1-AP (MBNL3 Antibody) at dilution of 1:50 (under 40x lens).