

For Research Use Only

# GRK1 Polyclonal antibody, PBS Only

Catalog Number: 24606-1-PBS



## Basic Information

<b>Catalog Number:</b> 24606-1-PBS	<b>GenBank Accession Number:</b> BC140945	<b>Purification Method:</b> Antigen affinity purification
<b>Concentration:</b> 1 mg/ml	<b>GeneID (NCBI):</b> 6011	
<b>Source:</b> Rabbit	<b>UNIPROT ID:</b> Q15835	
<b>Isotype:</b> IgG	<b>Full Name:</b> G protein-coupled receptor kinase 1	
<b>Immunogen Catalog Number:</b> AG18063	<b>Calculated MW:</b> 563 aa, 64 kDa	
	<b>Observed MW:</b> 64 kDa	

## Applications

**Tested Applications:**  
WB, IHC, IF-P, IP, Indirect ELISA

**Species Specificity:**  
human, mouse

## Background Information

GRK1 (G protein-coupled receptor kinase 1) is also named as RHOK, RK, GPRK1, and belongs to the AGC Ser/Thr protein kinase family. It is involved in quenching of light-induced signal transduction in the photoreceptor. GRK1 is a photoreceptor-specific enzyme that mediates adaptation of photoreceptors to light and protects these cells against light-induced injury.

## Storage

**Storage:**  
Store at -80°C.  
**The product is shipped with ice packs. Upon receipt, store it immediately at -80°C**

**Storage Buffer:**  
PBS only, pH7.3

For technical support and original validation data for this product please contact:

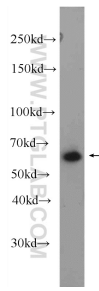
T: 4006900926

E: [Proteintech-CN@ptglab.com](mailto:Proteintech-CN@ptglab.com)

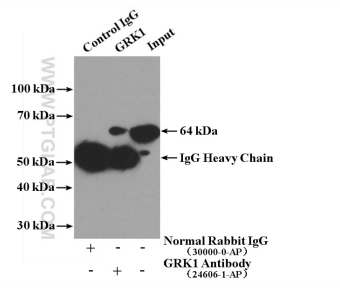
W: [ptgcn.com](http://ptgcn.com)

**This product is exclusively available under Proteintech Group brand and is not available to purchase from any other manufacturer.**

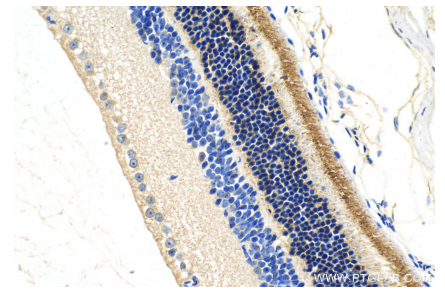
## Selected Validation Data



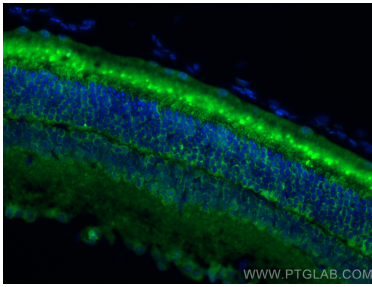
Y79 cells were subjected to SDS PAGE followed by western blot with 24606-1-AP (GRK1 Antibody) at dilution of 1:600 incubated at room temperature for 1.5 hours. This data was developed using the same antibody clone with 24606-1-PBS in a different storage buffer formulation.



IP result of anti-GRK1 (IP:24606-1-AP, 4ug; Detection:24606-1-AP 1:500) with Y79 cells lysate 1240ug. This data was developed using the same antibody clone with 24606-1-PBS in a different storage buffer formulation.



Immunohistochemical analysis of paraffin-embedded mouse eye tissue slide using 24606-1-AP (GRK1 antibody) at dilution of 1:500 (under 40x lens). Heat mediated antigen retrieval with Tris-EDTA buffer (pH 9.0). This data was developed using the same antibody clone with 24606-1-PBS in a different storage buffer formulation.



Immunofluorescent analysis of (4% PFA) fixed mouse eye tissue using GRK1 antibody (24606-1-AP) at dilution of 1:200 and CoraLite®488-Conjugated AffiniPure Goat Anti-Rabbit IgG(H+L). This data was developed using the same antibody clone with 24606-1-PBS in a different storage buffer formulation.