

For Research Use Only

# GRK1 Polyclonal antibody

Catalog Number: 24606-1-AP

4 Publications



## Basic Information

### Catalog Number:

24606-1-AP

### Concentration:

500 µg/ml

### Source:

Rabbit

### Isotype:

IgG

### Immunogen Catalog Number:

AG18063

### GenBank Accession Number:

BC140945

### GeneID (NCBI):

6011

### UNIPROT ID:

Q15835

### Full Name:

G protein-coupled receptor kinase 1

### Calculated MW:

563 aa, 64 kDa

### Observed MW:

64 kDa

### Purification Method:

Antigen affinity purification

### Recommended Dilutions:

WB 1:500-1:1000

IP 0.5-4.0 µg for 1.0-3.0 mg of total protein lysate

IHC 1:250-1:1000

IF-P 1:50-1:500

## Applications

### Tested Applications:

WB, IHC, IF-P, IP, ELISA

### Cited Applications:

WB, IHC, IF

### Species Specificity:

human, mouse

### Cited Species:

mouse, zebrafish

### Positive Controls:

WB: Y79 cells, mouse eye tissue

IP: Y79 cells,

IHC: mouse eye tissue,

IF-P: mouse eye tissue,

**Note-IHC: suggested antigen retrieval with TE buffer pH 9.0; (\*) Alternatively, antigen retrieval may be performed with citrate buffer pH 6.0**

## Background Information

GRK1 (G protein-coupled receptor kinase 1) is also named as RHOK, RK, GPRK1 and belongs to the AGC Ser/Thr protein kinase family. It is involved in quenching of light-induced signal transduction in photoreceptor. GRK1 is a photoreceptor-specific enzyme that mediates adaptation of photoreceptors to light and protects these cells against light-induced injury.

## Notable Publications

Author	Pubmed ID	Journal	Application
Zhi-Lin Ren	35503560	Zool Res	IHC
Kuanxiang Sun	39520804	Vision Res	WB, IHC
Xiao Li	37098815	FEBS J	WB, IF

## Storage

### Storage:

Store at -20°C. Stable for one year after shipment.

### Storage Buffer:

PBS with 0.02% sodium azide and 50% glycerol, pH7.3

Aliquoting is unnecessary for -20°C storage

For technical support and original validation data for this product please contact:

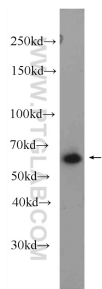
T: 4006900926

E: [Proteintech-CN@ptglab.com](mailto:Proteintech-CN@ptglab.com)

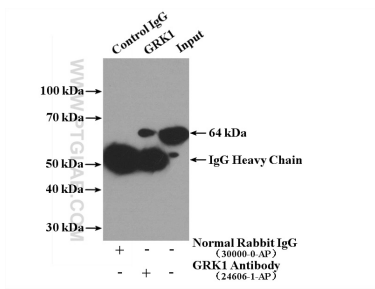
W: [ptgcn.com](http://ptgcn.com)

**This product is exclusively available under Proteintech Group brand and is not available to purchase from any other manufacturer.**

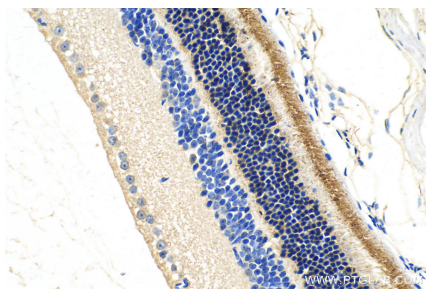
Selected Validation Data



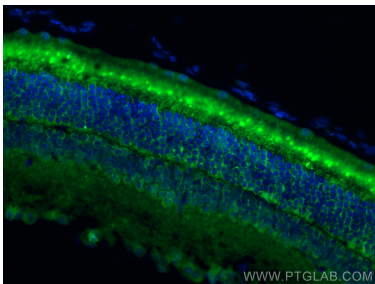
Y79 cells were subjected to SDS PAGE followed by western blot with 24606-1-AP (GRK1 Antibody) at dilution of 1:600 incubated at room temperature for 1.5 hours.



IP result of anti-GRK1 (IP:24606-1-AP, 4ug; Detection:24606-1-AP 1:500) with Y79 cells lysate 1240ug.



Immunohistochemical analysis of paraffin-embedded mouse eye tissue slide using 24606-1-AP (GRK1 antibody) at dilution of 1:500 (under 40x lens). Heat mediated antigen retrieval with Tris-EDTA buffer (pH 9.0).



Immunofluorescent analysis of (4% PFA) fixed mouse eye tissue using GRK1 antibody (24606-1-AP) at dilution of 1:200 and CoraLite®488-Conjugated Goat Anti-Rabbit IgG(H+L).