

For Research Use Only

# SLCO4C1 Polyclonal antibody

Catalog Number: 24584-1-AP

Featured Product

6 Publications



## Basic Information

**Catalog Number:**

24584-1-AP

**Size:**

400 µg/ml

**Source:**

Rabbit

**Isotype:**

IgG

**Immunogen Catalog Number:**

AG20177

**GenBank Accession Number:**

BC152989

**GeneID (NCBI):**

353189

**UNIPROT ID:**

Q6ZQN7

**Full Name:**

solute carrier organic anion transporter family, member 4C1

**Calculated MW:**

724 aa, 79 kDa

**Observed MW:**

70-85 kDa

**Purification Method:**

Antigen affinity purification

**Recommended Dilutions:**

WB 1:500-1:1000

IHC 1:200-1:800

## Applications

**Tested Applications:**

IHC, WB, ELISA

**Cited Applications:**

WB, IHC

**Species Specificity:**

human, mouse

**Cited Species:**

human, rat, mouse

**Note-IHC: suggested antigen retrieval with TE buffer pH 9.0; (\*) Alternatively, antigen retrieval may be performed with citrate buffer pH 6.0**

**Positive Controls:**

WB : human plasma, mouse kidney tissue

IHC : human kidney tissue,

## Background Information

### Notable Publications

Author	Pubmed ID	Journal	Application
Yuki Kanado	31540689	Biochem Biophys Res Commun	WB
Yue-Hua Jiang	33039628	J Ethnopharmacol	WB
Parker Giroux	35720166	World J Gastrointest Pathophysiol	WB

## Storage

**Storage:**

Store at -20°C. Stable for one year after shipment.

**Storage Buffer:**

PBS with 0.02% sodium azide and 50% glycerol pH 7.3.

Aliquoting is unnecessary for -20°C storage

For technical support and original validation data for this product please contact:

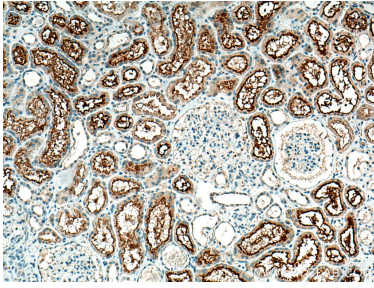
T: 4006900926

E: Proteintech-CN@ptglab.com

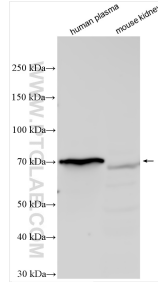
W: ptgcn.com

**This product is exclusively available under Proteintech Group brand and is not available to purchase from any other manufacturer.**

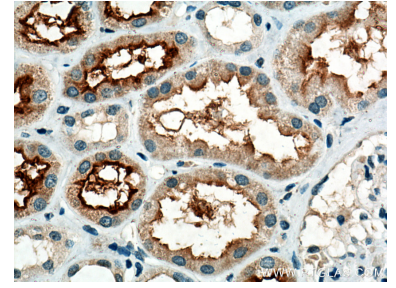
## Selected Validation Data



Immunohistochemical analysis of paraffin-embedded human kidney tissue slide using 24584-1-AP (SLCO4C1 antibody) at dilution of 1:400 (under 10x lens). Heat mediated antigen retrieval with Tris-EDTA buffer (pH 9.0).



Various lysates were subjected to SDS PAGE followed by western blot with 24584-1-AP (SLCO4C1 antibody) at dilution of 1:500 incubated at room temperature for 1.5 hours.



Immunohistochemical analysis of paraffin-embedded human kidney tissue slide using 24584-1-AP (SLCO4C1 antibody) at dilution of 1:400 (under 40x lens). Heat mediated antigen retrieval with Tris-EDTA buffer (pH 9.0).