

For Research Use Only

NR2F1 Polyclonal antibody

Catalog Number: 24573-1-AP

Featured Product

9 Publications



Basic Information

Catalog Number: 24573-1-AP	GenBank Accession Number: BC004154	Purification Method: Antigen affinity purification
Source: Rabbit	GeneID (NCBI): 7025	Recommended Dilutions: WB: 1:500-1:3000 IHC: 1:250-1:1000
Isotype: IgG	UNIPROT ID: P10589	
Immunogen Catalog Number: AG0118	Full Name: nuclear receptor subfamily 2, group F, member 1	
	Calculated MW: 50 kDa	
	Observed MW: 46 kDa	

Applications

Tested Applications: WB, IHC, ELISA	Positive Controls: WB : HEK-293 cells, PC-3 cells, NIH/3T3 cells
Cited Applications: WB, IHC, IF	IHC : human stomach cancer tissue, human ovary tissue
Species Specificity: human, mouse, rat	
Cited Species: human, mouse, rat	

Note-IHC: suggested antigen retrieval with TE buffer pH 9.0; (*) Alternatively, antigen retrieval may be performed with citrate buffer pH 6.0

Background Information

NR2F1 (Nuclear receptor subfamily 2, group F, member 1), also known as COUP-TF1, is an orphan nuclear receptor belonging to the superfamily of steroid/thyroid hormone receptors and acting as a strong transcriptional regulator. NR2F1 has a DNA binding domain (DBD) consisting of two conserved Zinc-finger motifs and a ligand-binding domain (LBD). NR2F1 also plays an epigenetic role in mediating global histone modifications by interacting with or recruiting chromatin-remodeling enzymes. NR2F1 can be a biomarker of tumor dormancy that promotes quiescence of various types of cancer cells, including breast, prostate, and squamous cell carcinoma of the head and neck (PMID: 35740627).

Notable Publications

Author	Pubmed ID	Journal	Application
Qiuju Liang	36230565	Cancers (Basel)	WB,IHC
Joshua E Burda	35614216	Nature	IHC
Xiao Yang	33990215	J Exp Clin Cancer Res	IHC

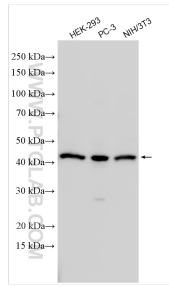
Storage

Storage:
Store at -20°C. Stable for one year after shipment.
Storage Buffer:
PBS with 0.02% sodium azide and 50% glycerol, pH7.3
Aliquoting is unnecessary for -20°C storage

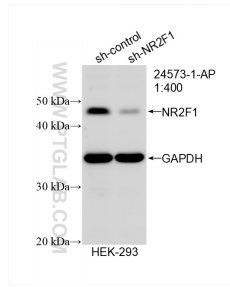
For technical support and original validation data for this product please contact:
T: 4006900926 E: Proteintech-CN@ptglab.com W: ptgcn.com

This product is exclusively available under Proteintech Group brand and is not available to purchase from any other manufacturer.

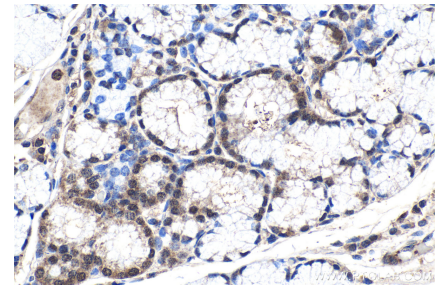
Selected Validation Data



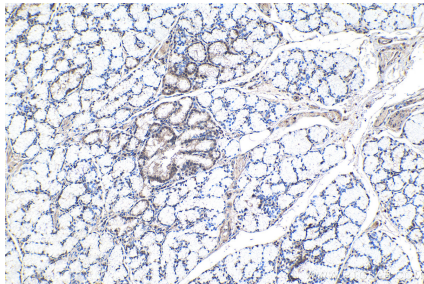
Various lysates were subjected to SDS PAGE followed by western blot with 24573-1-AP (NR2F1 antibody) at dilution of 1:1500 incubated at room temperature for 1.5 hours.



WB result of NR2F1 antibody (24573-1-AP; 1:400; incubated at room temperature for 1.5 hours) with sh-Control and sh-NR2F1 transfected HEK-293 cells.



Immunohistochemical analysis of paraffin-embedded human stomach cancer tissue slide using 24573-1-AP (NR2F1 antibody) at dilution of 1:500 (under 40x lens). Heat mediated antigen retrieval with Tris-EDTA buffer (pH 9.0).



Immunohistochemical analysis of paraffin-embedded human stomach cancer tissue slide using 24573-1-AP (NR2F1 antibody) at dilution of 1:500 (under 10x lens). Heat mediated antigen retrieval with Tris-EDTA buffer (pH 9.0).