

For Research Use Only

ENTPD7 Polyclonal antibody

Catalog Number: 24558-1-AP



Basic Information

Catalog Number:

24558-1-AP

Size:

1000 µg/ml

Source:

Rabbit

Isotype:

IgG

Immunogen Catalog Number:

AG18417

GenBank Accession Number:

BC122857

GeneID (NCBI):

57089

UNIPROT ID:

Q9NQZ7

Full Name:

ectonucleoside triphosphate diphosphohydrolase 7

Calculated MW:

604 aa, 69 kDa

Observed MW:

69 kDa

Purification Method:

Antigen affinity purification

Recommended Dilutions:

WB 1:200-1:1000

IHC 1:150-1:600

IF 1:20-1:200

Applications

Tested Applications:

IF/ICC, IHC, WB, ELISA

Species Specificity:

human

Note-IHC: suggested antigen retrieval with TE buffer pH 9.0; (*) Alternatively, antigen retrieval may be performed with citrate buffer pH 6.0

Positive Controls:

WB : HeLa cells,

IHC : human ovary tumor tissue,

IF : HeLa cells,

Background Information

Ectonucleoside triphosphate diphosphohydrolase 7 (ENTPD7), also known as LALP1, is a member of the ectonucleoside triphosphate diphosphohydrolase (E-NTPDase) family. It is located in the nucleoplasm and has an effect on oxidative stress, DNA damage and ageing (PMID: 27737960).

Storage

Storage:

Store at -20°C. Stable for one year after shipment.

Storage Buffer:

PBS with 0.02% sodium azide and 50% glycerol pH 7.3.

Aliquoting is unnecessary for -20°C storage

For technical support and original validation data for this product please contact:

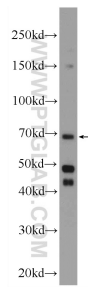
T: 4006900926

E: Proteintech-CN@ptglab.com

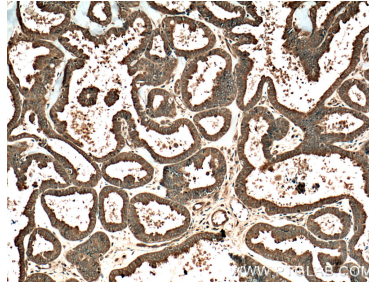
W: ptgcn.com

This product is exclusively available under Proteintech Group brand and is not available to purchase from any other manufacturer.

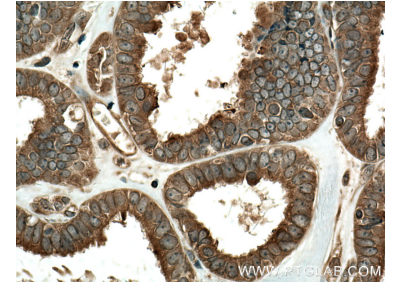
Selected Validation Data



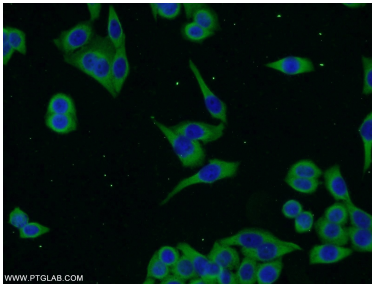
HeLa cells were subjected to SDS PAGE followed by western blot with 24558-1-AP (ENTPD7 Antibody) at dilution of 1:300 incubated at room temperature for 1.5 hours.



Immunohistochemical analysis of paraffin-embedded human ovary tumor tissue slide using 24558-1-AP (ENTPD7 Antibody) at dilution of 1:300 (under 10x lens). Heat mediated antigen retrieval with Tris-EDTA buffer (pH 9.0).



Immunohistochemical analysis of paraffin-embedded human ovary tumor tissue slide using 24558-1-AP (ENTPD7 Antibody) at dilution of 1:300 (under 40x lens). Heat mediated antigen retrieval with Tris-EDTA buffer (pH 9.0).



Immunofluorescent analysis of HeLa cells using 24558-1-AP (ENTPD7 antibody) at dilution of 1:50 and Alexa Fluor 488-conjugated AffiniPure Goat Anti-Rabbit IgG(H+L).