

For Research Use Only

IGFALS Polyclonal antibody

Catalog Number: 24545-1-AP



Basic Information

Catalog Number: 24545-1-AP	GenBank Accession Number: BC025681	Purification Method: Antigen affinity purification
Size: 350 µg/ml	GeneID (NCBI): 3483	Recommended Dilutions: WB 1:500-1:3000
Source: Rabbit	UNIPROT ID: P35858	
Isotype: IgG	Full Name: insulin-like growth factor binding protein, acid labile subunit	
Immunogen Catalog Number: AG21696	Calculated MW: 605 aa, 66 kDa	
	Observed MW: 85 kDa	

Applications

Tested Applications: WB, ELISA	Positive Controls: WB : human plasma,
Species Specificity: human	

Background Information

THE ACID-LABILE SUBUNIT (ALS), a liver-derived, GH-dependent, 85-kD glycoprotein, is a key component of the 150-kD IGF circulating ternary complex (PMID: 17726072). The protein encoded by this gene is a serum protein that binds insulin-like growth factors, increasing their half-life and their vascular localization. Production of the encoded protein, which contains twenty leucine-rich repeats, is stimulated by growth hormone. Defects in this gene are a cause of acid-labile subunit deficiency, which manifests itself in a delayed and slow puberty.

Storage

Storage:
Store at -20°C. Stable for one year after shipment.
Storage Buffer:
PBS with 0.02% sodium azide and 50% glycerol pH 7.3.
Aliquoting is unnecessary for -20°C storage

For technical support and original validation data for this product please contact:

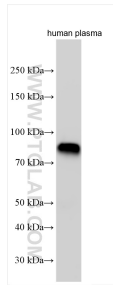
T: 4006900926

E: Proteintech-CN@ptglab.com

W: ptgcn.com

This product is exclusively available under Proteintech Group brand and is not available to purchase from any other manufacturer.

Selected Validation Data



Various lysates were subjected to SDS PAGE followed by western blot with 24545-1-AP (IGFALS antibody) at dilution of 1:1500 incubated at room temperature for 1.5 hours.