

SYTL5 Polyclonal antibody

Catalog Number: 24528-1-AP

Basic Information

Catalog Number: 24528-1-AP	GenBank Accession Number: BC131585	Purification Method: Antigen affinity purification
Size: 650 µg/ml	GeneID (NCBI): 94122	Recommended Dilutions: IHC 1:50-1:500 IF-P 1:50-1:500
Source: Rabbit	UNIPROT ID: Q8TDW5	
Isotype: IgG	Full Name: synaptotagmin-like 5	
Immunogen Catalog Number: AG21698	Calculated MW: 730 aa, 81 kDa	

Applications

Tested Applications: IF-P, IHC, ELISA	Positive Controls:
Species Specificity: human, mouse, rat	IHC : mouse brain tissue, rat brain tissue IF-P : rat brain tissue,

Note-IHC: suggested antigen retrieval with TE buffer pH 9.0; (*) Alternatively, antigen retrieval may be performed with citrate buffer pH 6.0

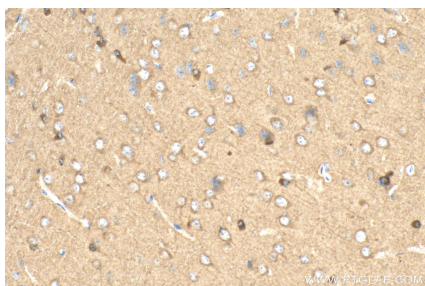
Background Information

SYTL5, also known as SLP5, is a member of the synaptotagmin-like protein (Slp) family. Members of this family are characterized by the presence of an N-terminal Slp homology domain (SHD), which functions as a Rab27-binding domain, and C-terminal tandem C2 domains, putative Ca(2+)-binding motifs. SYTL5 promotes the development and progression of papillary thyroid carcinoma (PTC) by activating the NF-κB signaling pathway (PMID: 36378561).

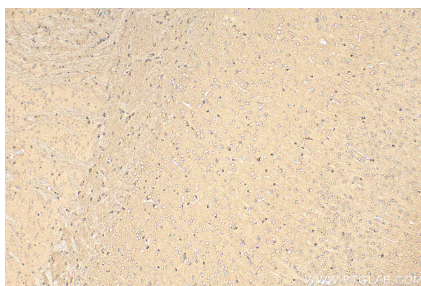
Storage

Storage:
Store at -20°C. Stable for one year after shipment.
Storage Buffer:
PBS with 0.02% sodium azide and 50% glycerol pH 7.3.
Aliquoting is unnecessary for -20°C storage

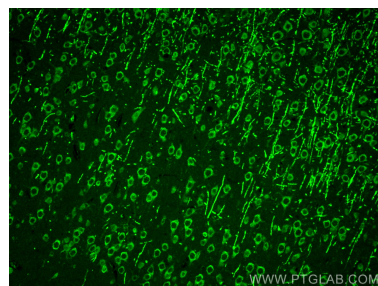
Selected Validation Data



Immunohistochemical analysis of paraffin-embedded mouse brain tissue slide using 24528-1-AP (SYTL5 antibody) at dilution of 1:200 (under 40x lens). Heat mediated antigen retrieval with Tris-EDTA buffer (pH 9.0).



Immunohistochemical analysis of paraffin-embedded mouse brain tissue slide using 24528-1-AP (SYTL5 antibody) at dilution of 1:200 (under 10x lens). Heat mediated antigen retrieval with Tris-EDTA buffer (pH 9.0).



Immunofluorescent analysis of (4% PFA) fixed rat brain tissue using SYTL5 antibody (24528-1-AP) at dilution of 1:200 and CoraLite®488-Conjugated AffiniPure Goat Anti-Rabbit IgG(H+L).