

For Research Use Only

# PPP2R3B Polyclonal antibody

Catalog Number: 24502-1-AP



## Basic Information

Catalog Number:

24502-1-AP

Size:

1000 µg/ml

Source:

Rabbit

Isotype:

IgG

Immunogen Catalog Number:

AG21366

GenBank Accession Number:

BC009032

GeneID (NCBI):

28227

UNIPROT ID:

Q9Y5P8

Full Name:

protein phosphatase 2 (formerly 2A),  
regulatory subunit B", beta

Calculated MW:

65 kDa

Observed MW:

65 kDa

Purification Method:

Antigen affinity purification

Recommended Dilutions:

WB 1:500-1:2000

## Applications

Tested Applications:

WB, ELISA

Species Specificity:

human

Positive Controls:

WB : HL-60 cells, HeLa cells

## Background Information

### Storage

Storage:

Store at -20°C. Stable for one year after shipment.

Storage Buffer:

PBS with 0.02% sodium azide and 50% glycerol pH 7.3.

Aliquoting is unnecessary for -20°C storage

For technical support and original validation data for this product please contact:

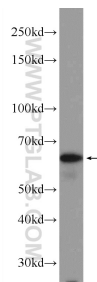
T: 4006900926

E: [Proteintech-CN@ptglab.com](mailto:Proteintech-CN@ptglab.com)

W: [ptgcn.com](http://ptgcn.com)

This product is exclusively available under Proteintech Group brand and is not available to purchase from any other manufacturer.

## Selected Validation Data



HL-60 cells were subjected to SDS PAGE followed by western blot with 24502-1-AP (PPP2R3B Antibody) at dilution of 1:1000 incubated at room temperature for 1.5 hours.