

Somatostatin (1-116aa) Polyclonal antibody

Catalog Number: **24496-1-AP**

Basic Information

| | | |
|--------------------------------------|---------------------------------------|---|
| Catalog Number: 24496-1-AP | GenBank Accession Number: BC032625 | Purification Method: Antigen affinity purification |
| Size: 800 µg/ml | GeneID (NCBI): 6750 | Recommended Dilutions: IHC 1:4000-1:16000 IF-P 1:50-1:500 |
| Source: Rabbit | UNIPROT ID: P61278 | |
| Isotype: IgG | Full Name: somatostatin | |
| Immunogen Catalog Number: AG21294 | Calculated MW: 13 kDa | |

Applications

| | |
|--|---|
| Tested Applications: IF-P, IHC, ELISA | Positive Controls: IHC : mouse pancreas tissue, IF-P : mouse pancreas tissue, |
| Species Specificity: human, mouse | |

Note-IHC: suggested antigen retrieval with TE buffer pH 9.0; (*) Alternatively, antigen retrieval may be performed with citrate buffer pH 6.0

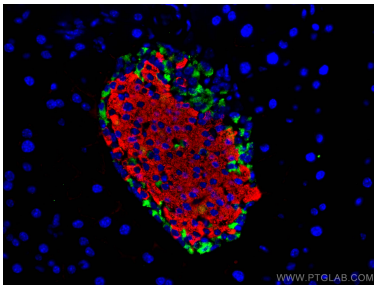
Background Information

Somatostatin is a peptide hormone that regulates the endocrine system and affects neurotransmission and cell proliferation via interaction with G protein-coupled somatostatin receptors and inhibition of the release of numerous secondary hormones. Somatostatin is a useful marker of D-cells of pancreatic islet cells. Somatostatin inhibits ins and glucagon secretion. Somatostatin has two active forms produced by alternative cleavage of a single preproprotein: one of 14 amino acids, the other of 28 amino acids. This antibody can recognize the full length and propeptide of Somatostatin.

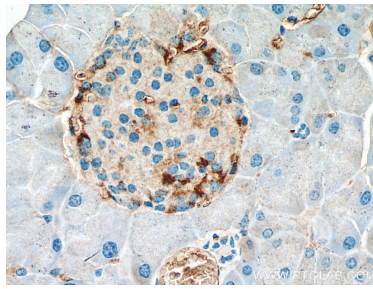
Storage

Storage:
Store at -20°C. Stable for one year after shipment.
Storage Buffer:
PBS with 0.02% sodium azide and 50% glycerol pH 7.3.
Aliquoting is unnecessary for -20°C storage

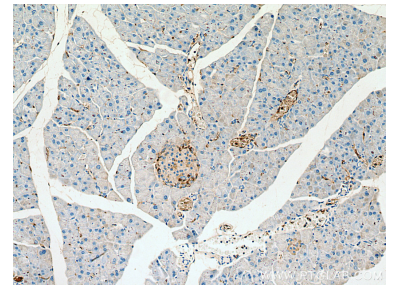
Selected Validation Data



Immunofluorescent analysis of (4% PFA) fixed mouse pancreas tissue using Somatostatin antibody (24496-1-AP) at dilution of 1:200 and CoraLite®488-Conjugated AffiniPure Goat Anti-Rabbit IgG(H+L), INS antibody (66198-1-Ig, Clone: 4B6A7, red).



Immunohistochemical analysis of paraffin-embedded mouse pancreas tissue slide using 24496-1-AP (Somatostatin antibody) at dilution of 1:8000 (under 40x lens). Heat mediated antigen retrieval with Tris-EDTA buffer (pH 9.0).



Immunohistochemical analysis of paraffin-embedded mouse pancreas tissue slide using 24496-1-AP (Somatostatin antibody) at dilution of 1:8000 (under 10x lens). Heat mediated antigen retrieval with Tris-EDTA buffer (pH 9.0).