

For Research Use Only

EXOSC9 Polyclonal antibody

Catalog Number: 24470-1-AP

Featured Product

1 Publications



Basic Information

Catalog Number:

24470-1-AP

Size:

400 ug/ml

Source:

Rabbit

Isotype:

IgG

Immunogen Catalog Number:

AG19768

GenBank Accession Number:

BC142978

GeneID (NCBI):

5393

UNIPROT ID:

Q06265

Full Name:

exosome component 9

Calculated MW:

456 aa, 51 kDa

Observed MW:

65-70 kDa

Purification Method:

Antigen affinity purification

Recommended Dilutions:

WB 1:1000-1:6000

IHC 1:50-1:500

IF/ICC 1:50-1:500

Applications

Tested Applications:

WB, IHC, IF/ICC, ELISA

Cited Applications:

WB

Species Specificity:

human, mouse

Cited Species:

human

Note-IHC: suggested antigen retrieval with TE buffer pH 9.0; (*) Alternatively, antigen retrieval may be performed with citrate buffer pH 6.0

Positive Controls:

WB : HEK-293 cells, MCF-7 cells, HeLa cells, HepG2 cells, NIH/3T3 cells

IHC : human prostate hyperplasia tissue, mouse kidney tissue

IF/ICC : HeLa cells,

Background Information

EXOSC9, also named as PMSC1 and PM/Scl-75, is a key subunit of the exosome complex. EXOSC9 maintains self-renewal in a cell-autonomous manner. EXOSC9 has 4 isoforms with MW 49 kDa, 51 kDa, 39 kDa and 41 kDa. It's polymyositis/scleroderma auto-antigen 75 kDa. The MW of EXOSC9 is migrated to 60-75 kDa for modification in WB detection.

Notable Publications

Author	Pubmed ID	Journal	Application
Tobias Moll	36241425	Life Sci Alliance	WB

Storage

Storage:

Store at -20°C. Stable for one year after shipment.

Storage Buffer:

PBS with 0.02% sodium azide and 50% glycerol pH 7.3.

Aliquoting is unnecessary for -20°C storage

For technical support and original validation data for this product please contact:

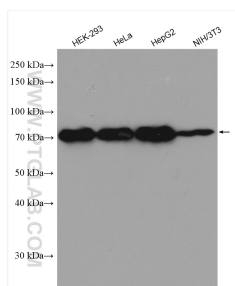
T: 4006900926

E: Proteintech-CN@ptglab.com

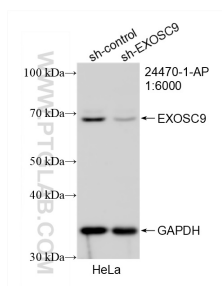
W: ptgcn.com

This product is exclusively available under Proteintech Group brand and is not available to purchase from any other manufacturer.

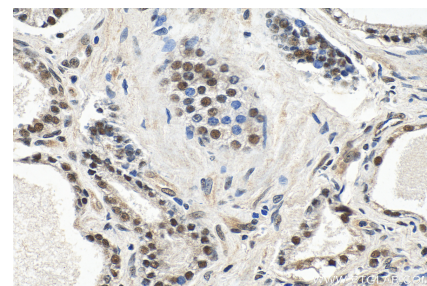
Selected Validation Data



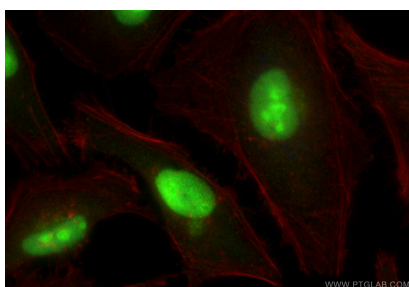
Various lysates were subjected to SDS PAGE followed by western blot with 24470-1-AP (EXOSC9 antibody) at dilution of 1:3000 incubated at room temperature for 1.5 hours.



WB result of EXOSC9 antibody (24470-1-AP; 1:6000; incubated at room temperature for 1.5 hours) with sh-Control and sh-EXOSC9 transfected HeLa cells.



Immunohistochemical analysis of paraffin-embedded human prostate hyperplasia tissue slide using 24470-1-AP (EXOSC9 antibody) at dilution of 1:200 (under 40x lens).



Immunofluorescent analysis of (4% PFA) fixed HeLa cells using EXOSC9 antibody (24470-1-AP) at dilution of 1:200 and CoraLite® 488-Conjugated Goat Anti-Rabbit IgG(H+L) (SA00013-2).