

For Research Use Only

TBC1D2B Polyclonal antibody, PBS Only

Catalog Number: 24462-1-PBS



Basic Information

Catalog Number: 24462-1-PBS	GenBank Accession Number: BC152465	Purification Method: Antigen affinity purification
Source: Rabbit	GeneID (NCBI): 23102	
Isotype: IgG	UNIPROT ID: Q9UPU7	
Immunogen Catalog Number: AG19632	Full Name: TBC1 domain family, member 2B	
	Calculated MW: 963 aa, 110 kDa	
	Observed MW: 120-125 kDa	

Applications

Tested Applications:
WB, IP, Indirect ELISA

Species Specificity:
human, mouse

Background Information

TBC1 domain family member 2B (TBC1D2B) contains a functional canonical LIR motif and acts at an early stage of autophagy by binding to both LC3/GABARAP and ATG12 conjugation complexes (PMID: 38226533). When there is a high protein level of RAB22A on early endosome, TBC1D2B is recruited and acts as a brake to prevent early endosomes from maturing into late endosomes (PMID: 39051763).

Storage

Storage:
Store at -80°C.
The product is shipped with ice packs. Upon receipt, store it immediately at -80°C

Storage Buffer:
PBS only, pH7.3

For technical support and original validation data for this product please contact:

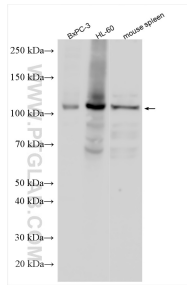
T: 4006900926

E: Proteintech-CN@ptglab.com

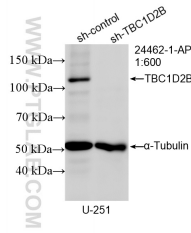
W: ptgcn.com

This product is exclusively available under Proteintech Group brand and is not available to purchase from any other manufacturer.

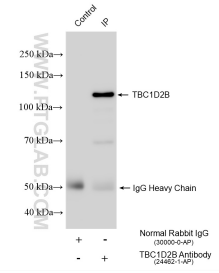
Selected Validation Data



Various lysates were subjected to SDS PAGE followed by western blot with 24462-1-AP (TBC1D2B antibody) at dilution of 1:600 incubated at room temperature for 1.5 hours. This data was developed using the same antibody clone with 24462-1-PBS in a different storage buffer formulation.



WB result of TBC1D2B antibody (24462-1-AP; 1:600; incubated at room temperature for 1.5 hours) with sh-Control and sh-TBC1D2B transfected U-251 cells. This data was developed using the same antibody clone with 24462-1-PBS in a different storage buffer formulation.



IP result of anti-TBC1D2B (IP:24462-1-AP, 4ug; Detection:24462-1-AP 1:600) with BxPC-3 cells lysate 1200 ug. This data was developed using the same antibody clone with 24462-1-PBS in a different storage buffer formulation.