

For Research Use Only

TBC1D2B Polyclonal antibody

Catalog Number: 24462-1-AP



Basic Information

Catalog Number:

24462-1-AP

Source:

Rabbit

Isotype:

IgG

Immunogen Catalog Number:

AG19632

GenBank Accession Number:

BC152465

GeneID (NCBI):

23102

UNIPROT ID:

Q9UPU7

Full Name:

TBC1 domain family, member 2B

Calculated MW:

963 aa, 110 kDa

Observed MW:

120-125 kDa

Purification Method:

Antigen affinity purification

Recommended Dilutions:

WB: 1:500-1:1000

IP: 0.5-4.0 ug for 1.0-3.0 mg of total protein lysate

Applications

Tested Applications:

WB, IP, ELISA

Species Specificity:

human, mouse

Positive Controls:

WB : BxPC-3 cells, U-251 cells, HL-60 cells, mouse spleen tissue

IP : BxPC-3 cells,

Background Information

TBC1 domain family member 2B (TBC1D2B) contains a functional canonical LIR motif and acts at an early stage of autophagy by binding to both LC3/GABARAP and ATG12 conjugation complexes (PMID: 38226533). When there is a high protein level of RAB22A on early endosome, TBC1D2B is recruited and acts as a brake to prevent early endosomes from maturing into late endosomes (PMID: 39051763).

Storage

Storage:

Store at -20°C. Stable for one year after shipment.

Storage Buffer:

PBS with 0.02% sodium azide and 50% glycerol, pH7.3

Aliquoting is unnecessary for -20°C storage

For technical support and original validation data for this product please contact:

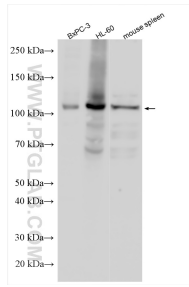
T: 4006900926

E: Proteintech-CN@ptglab.com

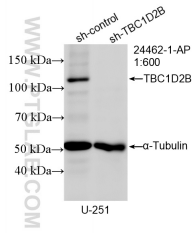
W: ptgcn.com

This product is exclusively available under Proteintech Group brand and is not available to purchase from any other manufacturer.

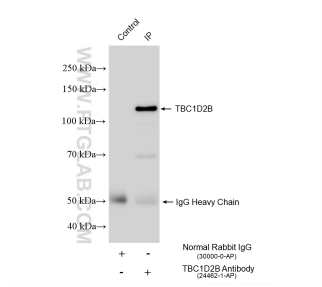
Selected Validation Data



Various lysates were subjected to SDS PAGE followed by western blot with 24462-1-AP (TBC1D2B antibody) at dilution of 1:600 incubated at room temperature for 1.5 hours.



WB result of TBC1D2B antibody (24462-1-AP; 1:600; incubated at room temperature for 1.5 hours) with sh-Control and sh-TBC1D2B transfected U-251 cells.



IP result of anti-TBC1D2B (IP:24462-1-AP, 4ug; Detection:24462-1-AP 1:600) with BxPC-3 cells lysate 1200 ug.