

For Research Use Only

# CEP44 Polyclonal antibody

Catalog Number: 24457-1-AP

Featured Product

8 Publications



## Basic Information

Catalog Number:

24457-1-AP

Concentration:

900 ug/ml

Source:

Rabbit

Isotype:

IgG

Immunogen Catalog Number:

AG19961

GenBank Accession Number:

BC038667

GeneID (NCBI):

80817

UNIPROT ID:

Q9C0F1

Full Name:

KIAA1712

Calculated MW:

390 aa, 44 kDa

Observed MW:

44 kDa

Purification Method:

Antigen affinity purification

Recommended Dilutions:

WB 1:1000-1:8000

IP 0.5-4.0 ug for 1.0-3.0 mg of total protein lysate

IHC 1:50-1:500

IF/ICC 1:50-1:500

## Applications

Tested Applications:

WB, IHC, IF/ICC, IP, ELISA

Cited Applications:

WB, IF, IP

Species Specificity:

human, mouse

Cited Species:

human, mouse

**Note-IHC: suggested antigen retrieval with TE buffer pH 9.0; (\*) Alternatively, antigen retrieval may be performed with citrate buffer pH 6.0**

Positive Controls:

WB : HeLa cells, mouse testis tissue, Jurkat cells, MCF-7 cells

IP : HeLa cells,

IHC : mouse brain tissue, human brain tissue

IF/ICC : MDCK cells,

## Background Information

CEP44, also named as KIAA1712 and PS1TP3, localizes to centrosomes, spindle poles, and weakly in midbody. It is a 44 kDa centrosome protein.

## Notable Publications

Author	Pubmed ID	Journal	Application
Delowar Hossain	34005155	J Cell Sci	WB,IF,IP
Delowar Hossain	31974111	J Cell Sci	WB,IF
Rachel E Turn	33596093	Mol Biol Cell	

## Storage

Storage:

Store at -20°C. Stable for one year after shipment.

Storage Buffer:

PBS with 0.02% sodium azide and 50% glycerol, pH7.3

Aliquoting is unnecessary for -20°C storage

For technical support and original validation data for this product please contact:

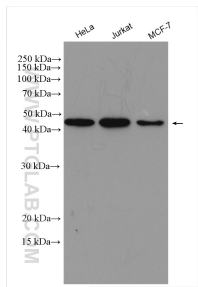
T: 4006900926

E: [Proteintech-CN@ptglab.com](mailto:Proteintech-CN@ptglab.com)

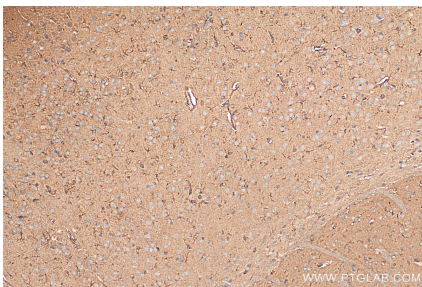
W: [ptgcn.com](http://ptgcn.com)

This product is exclusively available under Proteintech Group brand and is not available to purchase from any other manufacturer.

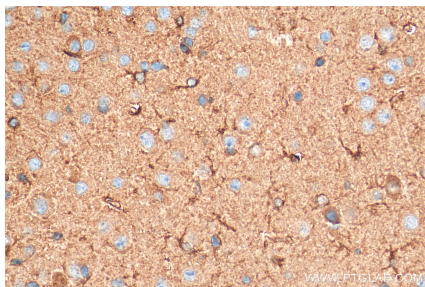
Selected Validation Data



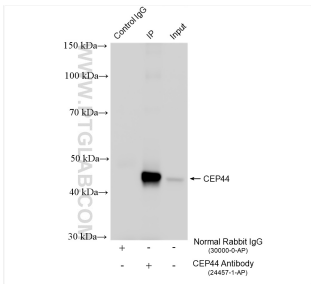
Various lysates were subjected to SDS PAGE followed by western blot with 24457-1-AP (CEP44 antibody) at dilution of 1:4000 incubated at room temperature for 1.5 hours.



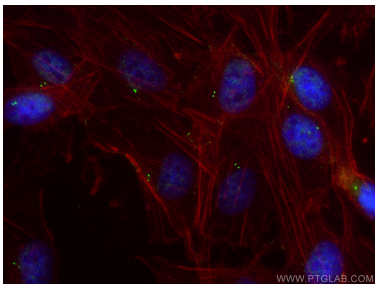
Immunohistochemical analysis of paraffin-embedded mouse brain tissue slide using 24457-1-AP (CEP44 antibody) at dilution of 1:200 (under 10x lens). Heat mediated antigen retrieval with Tris-EDTA buffer (pH 9.0).



Immunohistochemical analysis of paraffin-embedded mouse brain tissue slide using 24457-1-AP (CEP44 antibody) at dilution of 1:200 (under 40x lens). Heat mediated antigen retrieval with Tris-EDTA buffer (pH 9.0).



IP result of anti-CEP44 (IP:24457-1-AP, 4ug; Detection:24457-1-AP 1:3000) with HeLa cells lysate 1640 ug.



Immunofluorescent analysis of (4% PFA) fixed MDCK cells using CEP44 antibody (24457-1-AP) at dilution of 1:200 and CoraLite®488-Conjugated AffiniPure Goat Anti-Rabbit IgG(H+L) (SA00013-2), CL594-Phalloidin (red).