

For Research Use Only

OTOP1 Polyclonal antibody

Catalog Number: 24456-1-AP



Basic Information

Catalog Number:

24456-1-AP

Size:

500 µg/ml

Source:

Rabbit

Isotype:

IgG

Immunogen Catalog Number:

AG20011

GenBank Accession Number:

BC130430

GeneID (NCBI):

133060

UNIPROT ID:

Q7RTM1

Full Name:

otopetrin 1

Calculated MW:

612 aa, 67 kDa

Observed MW:

67 kDa

Purification Method:

Antigen affinity purification

Recommended Dilutions:

WB 1:200-1:1000

Applications

Tested Applications:

WB, ELISA

Species Specificity:

human, mouse

Positive Controls:

WB : mouse heart tissue,

Background Information

Storage

Storage:

Store at -20°C. Stable for one year after shipment.

Storage Buffer:

PBS with 0.02% sodium azide and 50% glycerol pH 7.3.

Aliquoting is unnecessary for -20°C storage

For technical support and original validation data for this product please contact:

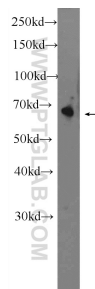
T: 4006900926

E: Proteintech-CN@ptglab.com

W: ptgcn.com

This product is exclusively available under Proteintech Group brand and is not available to purchase from any other manufacturer.

Selected Validation Data



mouse heart tissue were subjected to SDS PAGE followed by western blot with 24456-1-AP (OTOP1 Antibody) at dilution of 1:300 incubated at room temperature for 1.5 hours.