

For Research Use Only

LRP4 Polyclonal antibody

Catalog Number: 24434-1-AP



Basic Information

Catalog Number: 24434-1-AP	GenBank Accession Number: BC136667	Purification Method: Antigen affinity purification
Concentration: 250 ug/ml	GeneID (NCBI): 4038	Recommended Dilutions: WB 1:500-1:1000
Source: Rabbit	UNIPROT ID: O75096	
Isotype: IgG	Full Name: low density lipoprotein receptor-related protein 4	
Immunogen Catalog Number: AG19487	Calculated MW: 1905 aa, 212 kDa	
	Observed MW: 240 kDa	

Applications

Tested Applications: WB, ELISA	Positive Controls: WB : mouse brain tissue,
Species Specificity: human, mouse	

Background Information

LRP4 (low-density lipoprotein receptor-related protein 4), also known as multiple epidermal growth factor-like domains 7 (MEGF7), is a type I single transmembrane protein of the low-density lipoprotein receptor (LDLR) family. LRP4 is composed of a large extracellular region containing multiple LDLa repeats, EGF-like domains and β -propeller domains, a transmembrane region and a cytoplasmic region containing an NPxY motif and a PDZ-interacting motif (PMID: 26071838). LRP4 binds agrin and recruits it to the MuSK signaling complex, which is critical for neuromuscular junction formation (PMID: 17119023; 18957220). LRP4 mutation or malfunction is implicated in disorders including congenital myasthenic syndrome, myasthenia gravis, and diseases of bone or kidney (26071838).

Storage

Storage:
Store at -20°C. Stable for one year after shipment.
Storage Buffer:
PBS with 0.02% sodium azide and 50% glycerol pH 7.3.
Aliquoting is unnecessary for -20°C storage

For technical support and original validation data for this product please contact:

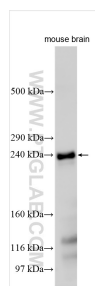
T: 4006900926

E: Proteintech-CN@ptglab.com

W: ptgcn.com

This product is exclusively available under Proteintech Group brand and is not available to purchase from any other manufacturer.

Selected Validation Data



Mouse brain tissue was subjected to SDS PAGE followed by western blot with 24434-1-AP (LRP4 antibody) at dilution of 1:500 incubated at room temperature for 1.5 hours.