

WDR7 Polyclonal antibody

Catalog Number: 24431-1-AP

1 Publications

Basic Information

Catalog Number:

24431-1-AP

Size:

800 µg/ml

Source:

Rabbit

Isotype:

IgG

Immunogen Catalog Number:

AG19072

GenBank Accession Number:

BC131558

GeneID (NCBI):

23335

UNIPROT ID:

Q9Y4E6

Full Name:

WD repeat domain 7

Calculated MW:

1490 aa, 164 kDa

Observed MW:

145-150 kDa

Purification Method:

Antigen affinity purification

Recommended Dilutions:

WB 1:500-1:3000

IHC 1:50-1:500

Applications

Tested Applications:

IHC, WB, ELISA

Cited Applications:

IF

Species Specificity:

human, rat, mouse

Note-IHC: suggested antigen retrieval with TE buffer pH 9.0; (*) Alternatively, antigen retrieval may be performed with citrate buffer pH 6.0

Positive Controls:

WB : mouse brain tissue, rat brain tissue

IHC : human liver tissue, mouse testis tissue

Background Information

WDR7, also named as KIAA0541 and TRAG, belongs to the WD-repeat protein family. WD repeats are areas with the repetitions of approximately 40 amino acids that have ends with trp-aspartic and glycine-histidine amino acids (GH-WD) which may help to form a multi-protein complex. WDR7 is the gene encoding adjacent of lincRNA-RoR, which has an important role in apoptosis and cell cycle (PMID: 32128092). WDR7 has 2 isoforms with the molecular mass of 160 and 164 kDa. Sometimes lower molecular weight around 150 kDa can also be observed, which may be a modified variant of WDR7.

Notable Publications

Author	Pubmed ID	Journal	Application
Ellen Crummy	31004036	J Biol Chem	IF

Storage

Storage:

Store at -20°C. Stable for one year after shipment.

Storage Buffer:

PBS with 0.02% sodium azide and 50% glycerol pH 7.3.

Aliquoting is unnecessary for -20°C storage

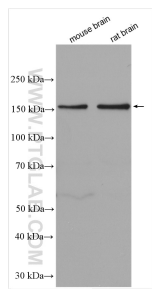
For technical support and original validation data for this product please contact:

T: 4006900926

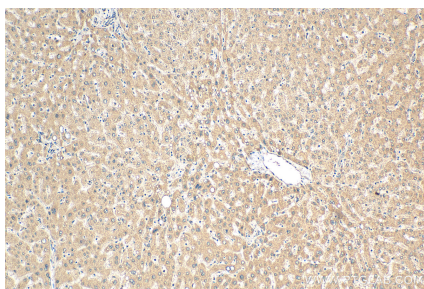
E: Proteintech-CN@ptglab.comW: ptgcn.com

This product is exclusively available under Proteintech Group brand and is not available to purchase from any other manufacturer.

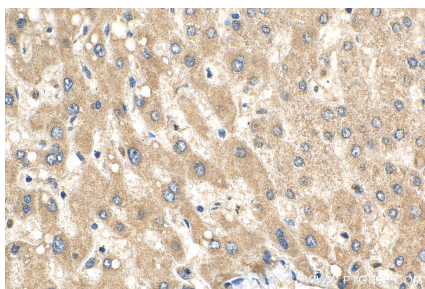
Selected Validation Data



Various lysates were subjected to SDS PAGE followed by western blot with 24431-1-AP (WDR7 antibody) at dilution of 1:1500 incubated at room temperature for 1.5 hours.



Immunohistochemical analysis of paraffin-embedded human liver tissue slide using 24431-1-AP (WDR7 antibody) at dilution of 1:200 (under 10x lens). Heat mediated antigen retrieval with Tris-EDTA buffer (pH 9.0).



Immunohistochemical analysis of paraffin-embedded human liver tissue slide using 24431-1-AP (WDR7 antibody) at dilution of 1:200 (under 40x lens). Heat mediated antigen retrieval with Tris-EDTA buffer (pH 9.0).