

PCMTD1 Polyclonal antibody

Catalog Number: 24425-1-AP

Basic Information

Catalog Number:

24425-1-AP

Size:

750 µg/ml

Source:

Rabbit

Isotype:

IgG

Immunogen Catalog Number:

AG19634

GenBank Accession Number:

BC032670

GeneID (NCBI):

115294

UNIPROT ID:

Q96MG8

Full Name:

protein-L-isoaspartate (D-aspartate)
O-methyltransferase domain
containing 1

Calculated MW:

357 aa, 41 kDa

Observed MW:

41 kDa, 27 kDa

Purification Method:

Antigen affinity purification

Recommended Dilutions:

WB 1:1000-1:10000

IF/ICC 1:50-1:500

Applications

Tested Applications:

WB, IF/ICC, ELISA

Species Specificity:

human, mouse, rat

Positive Controls:

WB : rat liver tissue, human placenta tissue, hTERT-
RPE1 cells, mouse eye tissue

IF/ICC : HepG2 cells,

Background Information

Protein-L-isoaspartate O-methyltransferase domain-containing protein 1 (PCMTD1) is a putative E3 ubiquitin ligase substrate adaptor protein, which has a C-terminal domain containing SOCS-box ubiquitin ligase recruitment motifs. PCMTD1 protein may provide an alternate maintenance pathway for modified proteins in mammalian cells (PMID: 35486881). This antibody can detect two isoforms of PCMTD1, 27 kDa and 41 kDa respectively (PMID: 37953789, 35486881).

Storage

Storage:

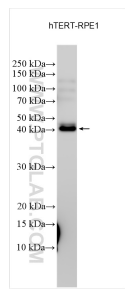
Store at -20°C. Stable for one year after shipment.

Storage Buffer:

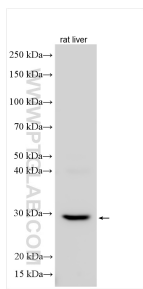
PBS with 0.02% sodium azide and 50% glycerol pH 7.3.

Aliquoting is unnecessary for -20°C storage

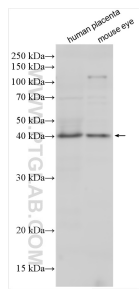
Selected Validation Data



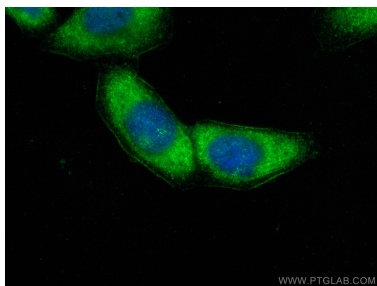
Various lysates were subjected to SDS PAGE followed by western blot with 24425-1-AP (PCMTD1 antibody) at dilution of 1:2000 incubated at room temperature for 1.5 hours.



Various lysates were subjected to SDS PAGE followed by western blot with 24425-1-AP (PCMTD1 antibody) at dilution of 1:6000 incubated at room temperature for 1.5 hours.



Various lysates were subjected to SDS PAGE followed by western blot with 24425-1-AP (PCMTD1 antibody) at dilution of 1:1000 incubated at room temperature for 1.5 hours.



Immunofluorescent analysis of (-20°C Ethanol) fixed HepG2 cells using PCMTD1 antibody (24425-1-AP) at dilution of 1:200 and CoraLite®488-Conjugated AffiniPure Goat Anti-Rabbit IgG(H+L).