

For Research Use Only

# CWC25 Polyclonal antibody

Catalog Number: 24416-1-AP



## Basic Information

Catalog Number:

24416-1-AP

Size:

800 µg/ml

Source:

Rabbit

Isotype:

IgG

Immunogen Catalog Number:

AG17037

GenBank Accession Number:

BC008833

GeneID (NCBI):

54883

UNIPROT ID:

Q9NXE8

Full Name:

coiled-coil domain containing 49

Calculated MW:

425 aa, 50 kDa

Observed MW:

50 kDa

Purification Method:

Antigen affinity purification

Recommended Dilutions:

WB 1:500-1:2000

IHC 1:20-1:200

IF/ICC 1:10-1:100

## Applications

Tested Applications:

IF/ICC, IHC, WB, ELISA

Species Specificity:

human, mouse

**Note-IHC: suggested antigen retrieval with TE buffer pH 9.0; (\*) Alternatively, antigen retrieval may be performed with citrate buffer pH 6.0**

Positive Controls:

WB : HeLa cells,

IHC : human testis tissue, human cervical cancer tissue

IF/ICC : HepG2 cells,

## Background Information

### Storage

Storage:

Store at -20°C. Stable for one year after shipment.

Storage Buffer:

PBS with 0.02% sodium azide and 50% glycerol pH 7.3.

Aliquoting is unnecessary for -20°C storage

For technical support and original validation data for this product please contact:

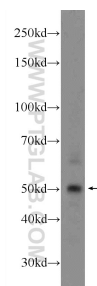
T: 4006900926

E: [Proteintech-CN@ptglab.com](mailto:Proteintech-CN@ptglab.com)

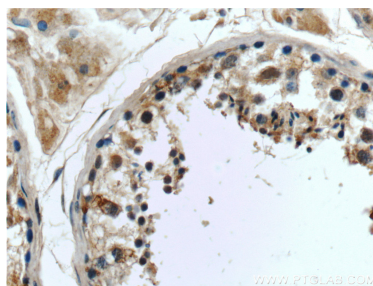
W: [ptgcn.com](http://ptgcn.com)

This product is exclusively available under Proteintech Group brand and is not available to purchase from any other manufacturer.

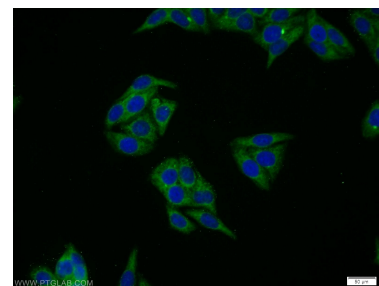
## Selected Validation Data



HeLa cells were subjected to SDS PAGE followed by western blot with 24416-1-AP (CWC25 antibody at dilution of 1:1000 incubated at room temperature for 1.5 hours.



Immunohistochemical analysis of paraffin-embedded human testis tissue slide using 24416-1-AP (CWC25 antibody at dilution of 1:50 (under 40x lens).



Immunofluorescent analysis of HepG2 cells using 24416-1-AP (CWC25 antibody) at dilution of 1:25 and Alexa Fluor 488-conjugated AffiniPure Goat Anti-Rabbit IgG(H+L).