

For Research Use Only

DMXL1 Polyclonal antibody

Catalog Number: 24413-1-AP

1 Publications



Basic Information

Catalog Number:

24413-1-AP

Size:

650 µg/ml

Source:

Rabbit

Isotype:

IgG

Immunogen Catalog Number:

AG19846

GenBank Accession Number:

BC150616

GeneID (NCBI):

1657

UNIPROT ID:

Q9Y485

Full Name:

Dmx-like 1

Calculated MW:

3027 aa, 338 kDa

Observed MW:

338 kDa

Purification Method:

Antigen affinity purification

Recommended Dilutions:

IP 0.5-4.0 µg for 1.0-3.0 mg of total protein lysate

Applications

Tested Applications:

IP, ELISA

Cited Applications:

WB

Species Specificity:

human

Cited Species:

mouse

Positive Controls:

IP : HEK-293 cells,

Background Information

DMXL1 is a member of the WD repeat superfamily of proteins, which have regulatory functions. DMXL1 is expressed in many tissue types including several types of eye tissue, and it has been associated with ocular phenotypes. In addition, it is upregulated in cultured cells that overexpress growth factor independence 1B, a transcription factor that is essential for hematopoietic cell development.

Notable Publications

Author	Pubmed ID	Journal	Application
Amity F Eaton	38984989	Function (Oxf)	WB

Storage

Storage:

Store at -20°C. Stable for one year after shipment.

Storage Buffer:

PBS with 0.02% sodium azide and 50% glycerol pH 7.3.

Aliquoting is unnecessary for -20°C storage

For technical support and original validation data for this product please contact:

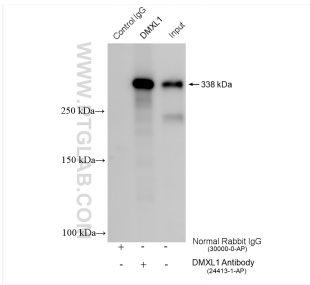
T: 4006900926

E: Proteintech-CN@ptglab.com

W: ptgcn.com

This product is exclusively available under Proteintech Group brand and is not available to purchase from any other manufacturer.

Selected Validation Data



IP result of anti-DMXL1 (IP:24413-1-AP, 4ug;
Detection:24413-1-AP 1:2500) with HEK-293 cells
lysate 960 ug.