

For Research Use Only

GTF2E1 Polyclonal antibody, PBS Only

Catalog Number: 24405-1-PBS



Basic Information

Catalog Number:

24405-1-PBS

Source:

Rabbit

Isotype:

IgG

Immunogen Catalog Number:

AG19794

GenBank Accession Number:

BC156997

GeneID (NCBI):

2960

UNIPROT ID:

P29083

Full Name:

general transcription factor IIE,
polypeptide 1, alpha 56kDa

Calculated MW:

439 aa, 49 kDa

Observed MW:

50 kDa

Purification Method:

Antigen affinity purification

Applications

Tested Applications:

WB, IHC, Indirect ELISA

Species Specificity:

human, mouse, rat

Background Information

Storage

Storage:

Store at -80°C.

The product is shipped with ice packs. Upon receipt, store it immediately at -80°C

Storage Buffer:

PBS only, pH7.3

For technical support and original validation data for this product please contact:

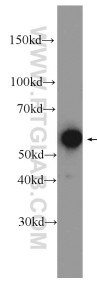
T: 4006900926

E: Proteintech-CN@ptglab.com

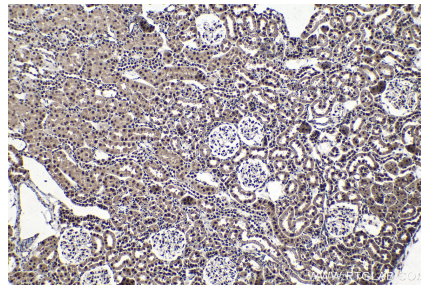
W: ptgcn.com

This product is exclusively available under Proteintech Group brand and is not available to purchase from any other manufacturer.

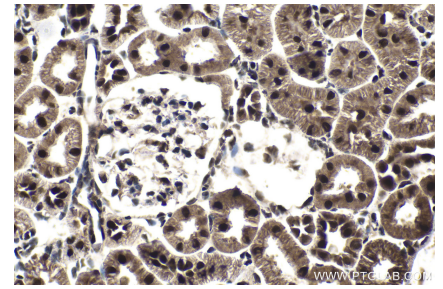
Selected Validation Data



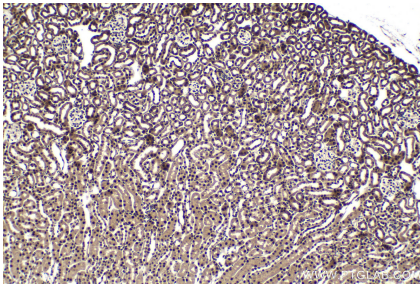
HEK-293 cells were subjected to SDS PAGE followed by western blot with 24405-1-AP (GTF2E1 Antibody) at dilution of 1:3000 incubated at room temperature for 1.5 hours. This data was developed using the same antibody clone with 24405-1-PBS in a different storage buffer formulation.



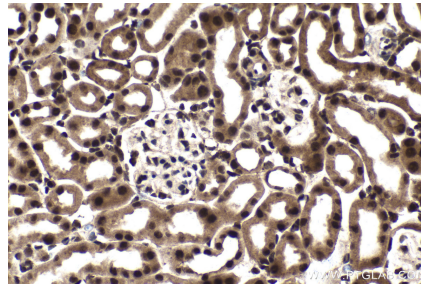
Immunohistochemical analysis of paraffin-embedded rat kidney tissue slide using 24405-1-AP (GTF2E1 antibody) at dilution of 1:2000 (under 10x lens). Heat mediated antigen retrieval with Tris-EDTA buffer (pH 9.0). This data was developed using the same antibody clone with 24405-1-PBS in a different storage buffer formulation.



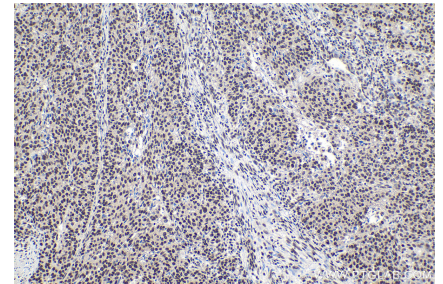
Immunohistochemical analysis of paraffin-embedded rat kidney tissue slide using 24405-1-AP (GTF2E1 antibody) at dilution of 1:2000 (under 40x lens). Heat mediated antigen retrieval with Tris-EDTA buffer (pH 9.0). This data was developed using the same antibody clone with 24405-1-PBS in a different storage buffer formulation.



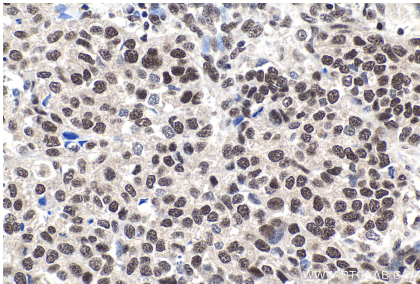
Immunohistochemical analysis of paraffin-embedded mouse kidney tissue slide using 24405-1-AP (GTF2E1 antibody) at dilution of 1:2000 (under 10x lens). Heat mediated antigen retrieval with Tris-EDTA buffer (pH 9.0). This data was developed using the same antibody clone with 24405-1-PBS in a different storage buffer formulation.



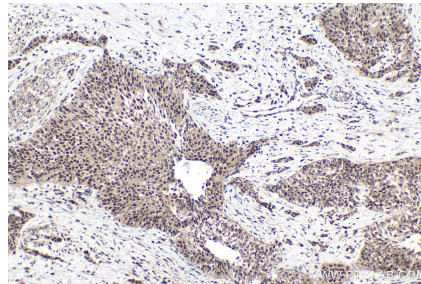
Immunohistochemical analysis of paraffin-embedded mouse kidney tissue slide using 24405-1-AP (GTF2E1 antibody) at dilution of 1:2000 (under 40x lens). Heat mediated antigen retrieval with Tris-EDTA buffer (pH 9.0). This data was developed using the same antibody clone with 24405-1-PBS in a different storage buffer formulation.



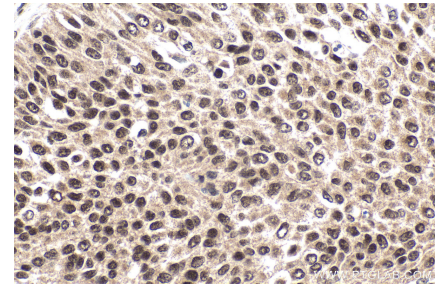
Immunohistochemical analysis of paraffin-embedded human stomach cancer tissue slide using 24405-1-AP (GTF2E1 antibody) at dilution of 1:2000 (under 10x lens). Heat mediated antigen retrieval with Tris-EDTA buffer (pH 9.0). This data was developed using the same antibody clone with 24405-1-PBS in a different storage buffer formulation.



Immunohistochemical analysis of paraffin-embedded human stomach cancer tissue slide using 24405-1-AP (GTF2E1 antibody) at dilution of 1:2000 (under 40x lens). Heat mediated antigen retrieval with Tris-EDTA buffer (pH 9.0). This data was developed using the same antibody clone with 24405-1-PBS in a different storage buffer formulation.



Immunohistochemical analysis of paraffin-embedded human urothelial carcinoma tissue slide using 24405-1-AP (GTF2E1 antibody) at dilution of 1:2000 (under 10x lens). Heat mediated antigen retrieval with Tris-EDTA buffer (pH 9.0). This data was developed using the same antibody clone with 24405-1-PBS in a different storage buffer formulation.



Immunohistochemical analysis of paraffin-embedded human urothelial carcinoma tissue slide using 24405-1-AP (GTF2E1 antibody) at dilution of 1:2000 (under 40x lens). Heat mediated antigen retrieval with Tris-EDTA buffer (pH 9.0). This data was developed using the same antibody clone with 24405-1-PBS in a different storage buffer formulation.