

For Research Use Only

# GPR152 Polyclonal antibody, PBS Only

Catalog Number: 24391-1-PBS



## Basic Information

<b>Catalog Number:</b> 24391-1-PBS	<b>GenBank Accession Number:</b> BC122869	<b>Purification Method:</b> Antigen affinity purification
<b>Concentration:</b> 1 mg/ml	<b>GeneID (NCBI):</b> 390212	
<b>Source:</b> Rabbit	<b>UNIPROT ID:</b> Q8TDT2	
<b>Isotype:</b> IgG	<b>Full Name:</b> G protein-coupled receptor 152	
<b>Immunogen Catalog Number:</b> AG18420	<b>Calculated MW:</b> 470 aa, 51 kDa	

## Applications

**Tested Applications:**  
IHC, Indirect ELISA

**Species Specificity:**  
human, mouse

## Background Information

GPR152 (G Protein-Coupled Receptor 152) is a G protein-coupled receptor. GPR152 is primarily expressed in the central nervous system (PMID: 15777626). Its role in GPCR signaling pathways suggests potential involvement in various physiological processes.

## Storage

**Storage:**  
Store at -80°C.  
**The product is shipped with ice packs. Upon receipt, store it immediately at -80°C**

**Storage Buffer:**  
PBS only, pH7.3

For technical support and original validation data for this product please contact:

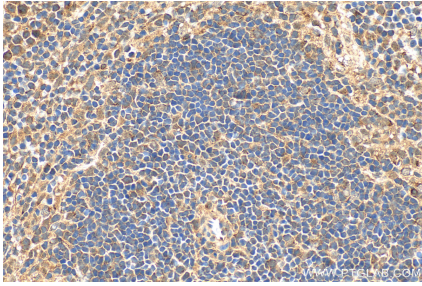
T: 4006900926

E: [Proteintech-CN@ptglab.com](mailto:Proteintech-CN@ptglab.com)

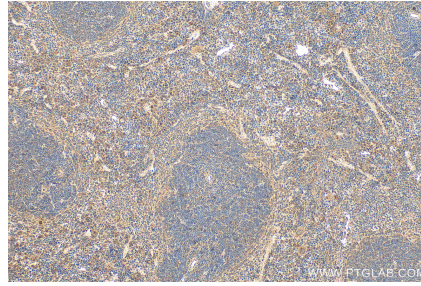
W: [ptgcn.com](http://ptgcn.com)

**This product is exclusively available under Proteintech Group brand and is not available to purchase from any other manufacturer.**

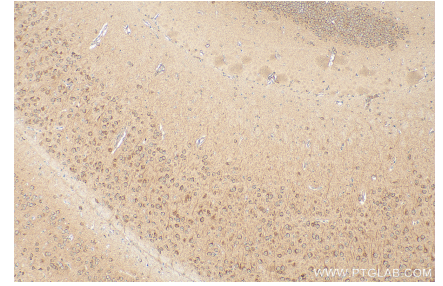
## Selected Validation Data



Immunohistochemical analysis of paraffin-embedded mouse spleen tissue slide using 24391-1-AP (GPR152 antibody) at dilution of 1:200 (under 40x lens). Heat mediated antigen retrieval with Tris-EDTA buffer (pH 9.0). This data was developed using the same antibody clone with 24391-1-PBS in a different storage buffer formulation.



Immunohistochemical analysis of paraffin-embedded mouse spleen tissue slide using 24391-1-AP (GPR152 antibody) at dilution of 1:200 (under 10x lens). Heat mediated antigen retrieval with Tris-EDTA buffer (pH 9.0). This data was developed using the same antibody clone with 24391-1-PBS in a different storage buffer formulation.



Immunohistochemical analysis of paraffin-embedded mouse brain tissue slide using 24391-1-AP (GPR152 antibody) at dilution of 1:200 (under 10x lens). Heat mediated antigen retrieval with Tris-EDTA buffer (pH 9.0). This data was developed using the same antibody clone with 24391-1-PBS in a different storage buffer formulation.