

For Research Use Only

NCBP3 Polyclonal antibody

Catalog Number: 24384-1-AP **1 Publications**



Basic Information

Catalog Number: 24384-1-AP	GenBank Accession Number: BC148856	Purification Method: Antigen affinity purification
Size: 400 µg/ml	GeneID (NCBI): 55421	Recommended Dilutions: WB 1:1000-1:4000 IF 1:10-1:100
Source: Rabbit	UNIPROT ID: Q53F19	
Isotype: IgG	Full Name: chromosome 17 open reading frame 85	
Immunogen Catalog Number: AG20021	Calculated MW: 620 aa, 70 kDa	
	Observed MW: 71-80 kDa	

Applications

Tested Applications: IF/ICC, WB, ELISA	Positive Controls: WB : A549 cells, HeLa cells, Jurkat cells, PC-3 cells IF : HeLa cells,
Cited Applications: WB	
Species Specificity: human	
Cited Species: human	

Background Information

chromosome 17 open reading frame 85(C17orf85)also named as Protein ELG is 620 amino acids protein, which is localizes in human chromosome 17. The function of protein is still non-known and it consists of some phosphorylation site . It may involves in human embryonic stem cell differentiation.

Notable Publications

Author	Pubmed ID	Journal	Application
Xiwen Li	32618493	RNA Biol	WB

Storage

Storage:
Store at -20°C. Stable for one year after shipment.
Storage Buffer:
PBS with 0.02% sodium azide and 50% glycerol pH 7.3.
Aliquoting is unnecessary for -20°C storage

For technical support and original validation data for this product please contact:

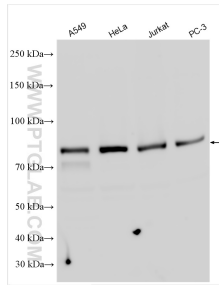
T: 4006900926

E: Proteintech-CN@ptglab.com

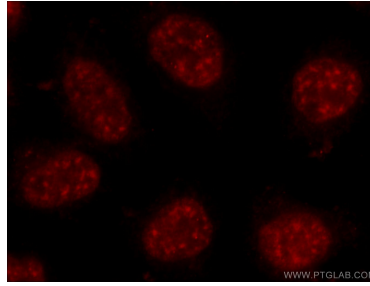
W: ptgcn.com

This product is exclusively available under Proteintech Group brand and is not available to purchase from any other manufacturer.

Selected Validation Data



Various lysates were subjected to SDS PAGE followed by western blot with 24384-1-AP (NCBP3 antibody) at dilution of 1:2000 incubated at room temperature for 1.5 hours.



Immunofluorescent analysis of HeLa cells using 24384-1-AP (NCBP3 antibody) at dilution of 1:25 and Rhodamine-Goat anti-Rabbit IgG.