

For Research Use Only

# METTL13 Polyclonal antibody

Catalog Number: 24379-1-AP



## Basic Information

<b>Catalog Number:</b> 24379-1-AP	<b>GenBank Accession Number:</b> BC029083	<b>Purification Method:</b> Antigen affinity purification
<b>Concentration:</b> 500 ug/ml	<b>GeneID (NCBI):</b> 51603	<b>Recommended Dilutions:</b> WB 1:500-1:1000 IF/ICC 1:200-1:800
<b>Source:</b> Rabbit	<b>UNIPROT ID:</b> Q8N6R0	
<b>Isotype:</b> IgG	<b>Full Name:</b> methyltransferase like 13	
<b>Immunogen Catalog Number:</b> AG19355	<b>Calculated MW:</b> 699 aa, 79 kDa	
	<b>Observed MW:</b> 72-78 kDa	

## Applications

<b>Tested Applications:</b> WB, IF/ICC, ELISA	<b>Positive Controls:</b> WB : 5637 cells, IF/ICC : U-251 cells,
<b>Species Specificity:</b> human	

## Background Information

Protein methyltransferase like 13 (METTL13), also called FEAT, is coded by gene METTL13, which is located at chromosome 1q24.3. Purified from rat livers in 2011 by a Japanese researcher, METTL13 was found to be abnormally overexpressed in several human cancers including lung cancer and to drive tumorigenesis in transgenic mice. A study indicated that METTL13 inhibits apoptosis of lung, breast and liver cancer cells and miR-16 can repress the expression of METTL13 by binding to its 3' -untranslated region. (PMID: 33985542)

## Storage

**Storage:**  
Store at -20°C. Stable for one year after shipment.  
**Storage Buffer:**  
PBS with 0.02% sodium azide and 50% glycerol, pH7.3  
Aliquoting is unnecessary for -20°C storage

For technical support and original validation data for this product please contact:

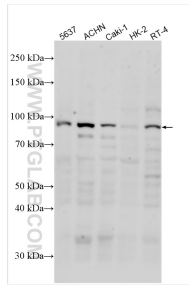
T: 4006900926

E: [Proteintech-CN@ptglab.com](mailto:Proteintech-CN@ptglab.com)

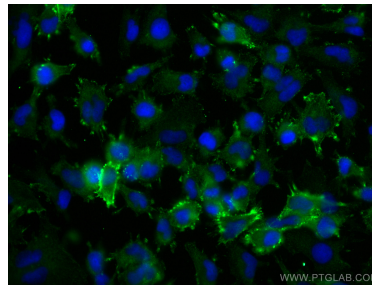
W: [ptgcn.com](http://ptgcn.com)

This product is exclusively available under Proteintech Group brand and is not available to purchase from any other manufacturer.

## Selected Validation Data



Various lysates were subjected to SDS PAGE followed by western blot with 24379-1-AP (METTL13 antibody) at dilution of 1:500 incubated at room temperature for 1.5 hours.



Immunofluorescent analysis of (-20°C Ethanol) fixed U-251 cells using METTL13 antibody (24379-1-AP) at dilution of 1:400 and CoraLite® 488-Conjugated AffiniPure Goat Anti-Rabbit IgG(H+L).