

For Research Use Only

# MSL1 Polyclonal antibody

Catalog Number: 24373-1-AP

Featured Product

4 Publications



## Basic Information

Catalog Number:

24373-1-AP

Concentration:

550 ug/ml

Source:

Rabbit

Isotype:

IgG

Immunogen Catalog Number:

AG18024

GenBank Accession Number:

BC122543

GeneID (NCBI):

339287

UNIPROT ID:

Q68DK7

Full Name:

male-specific lethal 1 homolog  
(Drosophila)

Calculated MW:

614 aa, 67 kDa

Observed MW:

67 kDa

Purification Method:

Antigen affinity purification

Recommended Dilutions:

WB 1:500-1:1000

## Applications

Tested Applications:

WB, ELISA

Cited Applications:

WB

Species Specificity:

human

Cited Species:

human

Positive Controls:

WB : HeLa cells,

## Background Information

Male - specific lethal 1 (MSL1) is critical for the formation of MSL histone acetyltransferase complex which acetylates histone H4 Lys16 (H4K16ac) to activate gene expression.

## Notable Publications

Author	Pubmed ID	Journal	Application
Tao Wei	35416545	Cell Mol Life Sci	WB
Lifu Luo	40221412	Cell Death Dis	WB
Wenqi Chen	39250546	FEBS J	WB

## Storage

Storage:

Store at -20°C. Stable for one year after shipment.

Storage Buffer:

PBS with 0.02% sodium azide and 50% glycerol, pH7.3

Aliquoting is unnecessary for -20°C storage

For technical support and original validation data for this product please contact:

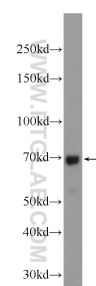
T: 4006900926

E: [Proteintech-CN@ptglab.com](mailto:Proteintech-CN@ptglab.com)

W: [ptgcn.com](http://ptgcn.com)

This product is exclusively available under Proteintech Group brand and is not available to purchase from any other manufacturer.

## Selected Validation Data



HeLa cells were subjected to SDS PAGE followed by western blot with 24373-1-AP (MSL1 Antibody) at dilution of 1:600 incubated at room temperature for 1.5 hours.