

# RBM46 Polyclonal antibody

Catalog Number: 24368-1-AP

## Basic Information

**Catalog Number:**

24368-1-AP

**Size:**

700 µg/ml

**Source:**

Rabbit

**Isotype:**

IgG

**Immunogen Catalog Number:**

AG21653

**GenBank Accession Number:**

BC028588

**GeneID (NCBI):**

166863

**UNIPROT ID:**

Q8TBY0

**Full Name:**

RNA binding motif protein 46

**Calculated MW:**

533 aa, 60 kDa

**Observed MW:**

63 kDa

**Purification Method:**

Antigen affinity purification

**Recommended Dilutions:**

WB 1:500-1:2000

IHC 1:50-1:500

## Applications

**Tested Applications:**

WB, IHC, ELISA

**Species Specificity:**

human

**Note-IHC:** suggested antigen retrieval with **TE buffer pH 9.0; (\*)** Alternatively, antigen retrieval may be performed with **citrate buffer pH 6.0**

**Positive Controls:**

**WB :** Jurkat cells,

**IHC :** human kidney tissue,

## Background Information

### Storage

**Storage:**

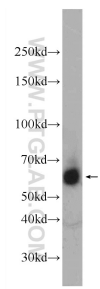
Store at -20°C. Stable for one year after shipment.

**Storage Buffer:**

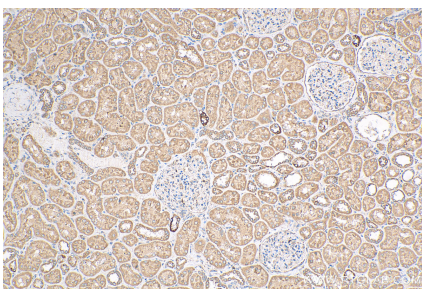
PBS with 0.02% sodium azide and 50% glycerol pH 7.3.

Aliquoting is unnecessary for -20°C storage

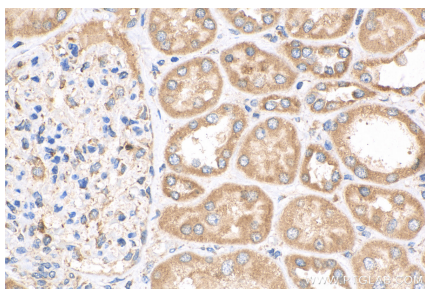
Selected Validation Data



Jurkat cells were subjected to SDS PAGE followed by western blot with 24368-1-AP (RBM46 Antibody) at dilution of 1:1000 incubated at room temperature for 1.5 hours.



Immunohistochemical analysis of paraffin-embedded human kidney tissue slide using 24368-1-AP (RBM46 antibody) at dilution of 1:100 (under 10x lens). Heat mediated antigen retrieval with Tris-EDTA buffer (pH 9.0).



Immunohistochemical analysis of paraffin-embedded human kidney tissue slide using 24368-1-AP (RBM46 antibody) at dilution of 1:100 (under 40x lens). Heat mediated antigen retrieval with Tris-EDTA buffer (pH 9.0).