

For Research Use Only

UHRF1BP1 Polyclonal antibody, PBS Only

Catalog Number: 24345-1-PBS



Basic Information

Catalog Number:

24345-1-PBS

Source:

Rabbit

Isotype:

IgG

Immunogen Catalog Number:

AG19677

GenBank Accession Number:

BC137120

GeneID (NCBI):

54887

UNIPROT ID:

Q6BDS2

Full Name:

UHRF1 binding protein 1

Calculated MW:

1440 aa, 159 kDa

Observed MW:

160-170 kDa

Purification Method:

Antigen affinity purification

Applications

Tested Applications:

WB, Indirect ELISA

Species Specificity:

human

Background Information

Bridge-like lipid transfer protein family member 3A (BLTP3A), also known as UHRF1BP1, is a conserved protein characterized by six repeating beta-groove modules that form a hydrophobic groove for bulk lipid transfer between membranes. It localizes to VAMP7-positive vesicles and anchors them to LAMP1-positive lysosomes via its chorein domain and Rab7 interaction. Upon lysosomal membrane damage, BLTP3A rapidly dissociates and is re-recruited through its LIR motif binding to mATG8 proteins via the CASM pathway. This dynamic behavior suggests BLTP3A delivers lipids to aid in lysosomal repair (PMID: 40935891). Beyond its cellular function, BLTP3A has been identified as a genetic risk factor for systemic lupus erythematosus.

Storage

Storage:

Store at -80°C.

The product is shipped with ice packs. Upon receipt, store it immediately at -80°C

Storage Buffer:

PBS only, pH7.3

For technical support and original validation data for this product please contact:

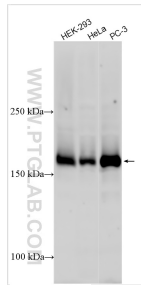
T: 4006900926

E: Proteintech-CN@ptglab.com

W: ptgcn.com

This product is exclusively available under Proteintech Group brand and is not available to purchase from any other manufacturer.

Selected Validation Data



Various lysates were subjected to SDS PAGE followed by western blot with 24345-1-AP (UHRF1BP1 antibody) at dilution of 1:5000 incubated at room temperature for 1.5 hours. This data was developed using the same antibody clone with 24345-1-PBS in a different storage buffer formulation.