

# ERP29 Polyclonal antibody

Catalog Number: 24344-1-AP

2 Publications

## Basic Information

## Catalog Number:

24344-1-AP

## Size:

350 µg/ml

## Source:

Rabbit

## Isotype:

IgG

## Immunogen Catalog Number:

AG19451

## GenBank Accession Number:

BC101495

## GeneID (NCBI):

10961

## UNIPROT ID:

P30040

## Full Name:

endoplasmic reticulum protein 29

## Calculated MW:

261 aa, 29 kDa

## Observed MW:

29 kDa

## Purification Method:

Antigen affinity purification

## Recommended Dilutions:

WB 1:500-1:3000

IP 0.5-4.0 µg for 1.0-3.0 mg of total protein lysate

IHC 1:50-1:500

IF-P 1:50-1:500

IF/ICC 1:10-1:100

## Applications

## Tested Applications:

WB, IHC, IF/ICC, IF-P, IP, ELISA

## Cited Applications:

WB, ColP, IF

## Species Specificity:

human, mouse, rat

## Cited Species:

mouse

**Note-IHC: suggested antigen retrieval with TE buffer pH 9.0; (\*) Alternatively, antigen retrieval may be performed with citrate buffer pH 6.0**

## Positive Controls:

**WB:** L02 cells, HEK-293 cells, mouse kidney tissue, mouse liver tissue, mouse lung tissue, rat testis tissue

**IP:** mouse liver tissue,

**IHC:** human liver cancer tissue, human breast cancer tissue, human pancreas tissue

**IF-P:** human liver cancer tissue,

**IF/ICC:** HeLa cells,

## Background Information

Endoplasmic reticulum resident protein 29 (ERP29) is a 29-kDa endoplasmic reticulum (ER) luminal protein. Structurally ERP29 is related to protein disulfide isomerases (PDI). However, it lacks the thioredoxin motif, suggesting that this protein does not function as a disulfide isomerase (PMID: 15500441). ERP29 plays an important role in the processing of secretory proteins within the (ER), possibly by participating in the folding of proteins in the ER. The secretion of thyroglobulin (TG) was found to be strongly regulated by ERP29 (PMID: 16380091).

## Notable Publications

Author	Pubmed ID	Journal	Application
Ya Hui	36302455	Metabolism	WB,IF,ColP
Jiaxiu Li	36936785	iScience	WB

## Storage

## Storage:

Store at -20°C. Stable for one year after shipment.

## Storage Buffer:

PBS with 0.02% sodium azide and 50% glycerol pH 7.3.

Aliquoting is unnecessary for -20°C storage

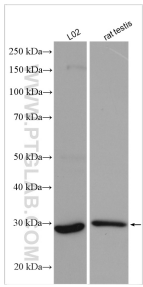
For technical support and original validation data for this product please contact:

T: 4006900926

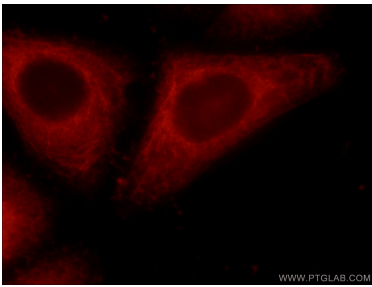
E: [Proteintech-CN@ptglab.com](mailto:Proteintech-CN@ptglab.com)W: [ptgcn.com](http://ptgcn.com)

**This product is exclusively available under Proteintech Group brand and is not available to purchase from any other manufacturer.**

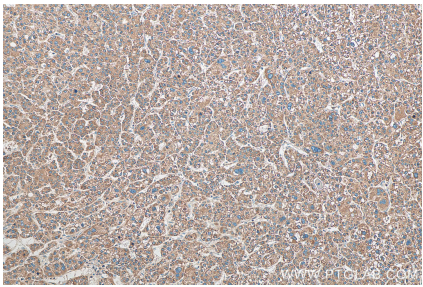
Selected Validation Data



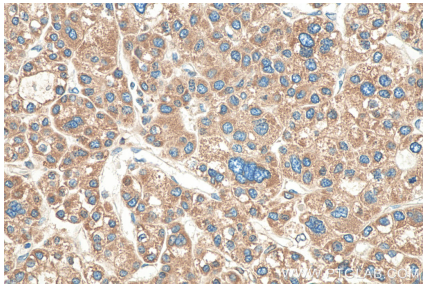
Various lysates were subjected to SDS PAGE followed by western blot with 24344-1-AP (ERP29 antibody) at dilution of 1:1500 incubated at room temperature for 1.5 hours.



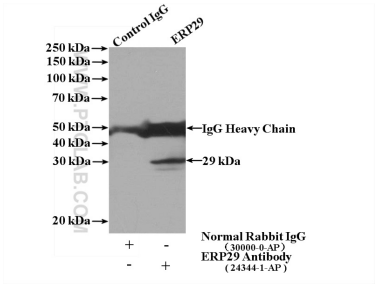
Immunofluorescent analysis of HeLa cells using 24344-1-AP (ERP29 antibody) at dilution of 1:25 and Rhodamine-Goat anti-Rabbit IgG.



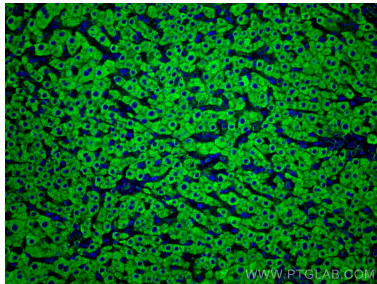
Immunohistochemical analysis of paraffin-embedded human liver cancer tissue slide using 24344-1-AP (ERP29 antibody) at dilution of 1:200 (under 10x lens). Heat mediated antigen retrieval with Tris-EDTA buffer (pH 9.0).



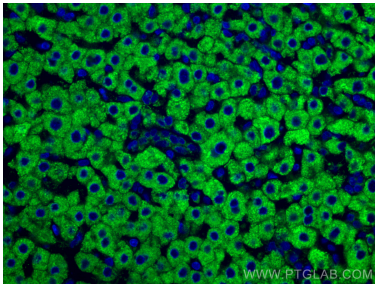
Immunohistochemical analysis of paraffin-embedded human liver cancer tissue slide using 24344-1-AP (ERP29 antibody) at dilution of 1:200 (under 40x lens). Heat mediated antigen retrieval with Tris-EDTA buffer (pH 9.0).



IP result of anti-ERP29 (IP:24344-1-AP, 4ug; Detection:24344-1-AP 1:1000) with mouse liver tissue lysate 4000ug.



Immunofluorescent analysis of (4% PFA) fixed human liver cancer tissue using ERP29 antibody (24344-1-AP) at dilution of 1:200 and CoraLite®488-Conjugated AffiniPure Goat Anti-Rabbit IgG(H+L).



Immunofluorescent analysis of (4% PFA) fixed human liver cancer tissue using ERP29 antibody (24344-1-AP) at dilution of 1:200 and CoraLite®488-Conjugated AffiniPure Goat Anti-Rabbit IgG(H+L).