

## KDM2A Polyclonal antibody

Catalog Number: 24311-1-AP

5 Publications

## Basic Information

## Catalog Number:

24311-1-AP

## Size:

700 µg/ml

## Source:

Rabbit

## Isotype:

IgG

## Immunogen Catalog Number:

AG19448

## GenBank Accession Number:

BC064360

## GeneID (NCBI):

22992

## UNIPROT ID:

Q9Y2K7

## Full Name:

lysine (K)-specific demethylase 2A

## Calculated MW:

1162 aa, 133 kDa

## Observed MW:

126 kDa

## Purification Method:

Antigen affinity purification

## Recommended Dilutions:

WB 1:500-1:2000

IP 0.5-4.0 µg for 1.0-3.0 mg of total protein lysate

## Applications

## Tested Applications:

IP, WB, ELISA

## Cited Applications:

WB, IP, IF, IHC, CoIP

## Species Specificity:

human, mouse

## Cited Species:

human

## Positive Controls:

WB : Jurkat cells, NIH/3T3 cells

IP : HeLa cells,

## Background Information

KDM2A(Lysine-specific demethylase 2A) is also named as CXXC8, FBL7, FBXL11, JHDM1A, KIAA1004 and belongs to the JHDM1 histone demethylase family. It is required to maintain the heterochromatic state, and playing a role in epigenetic silencing. KDM2A is one of the four subunits of the E3 ubiquitin protein ligase complex (SCF) with SKP1, CUL1, RBX1, Fbox protein bringing ubiquitin conjugating enzymes to substrates recruited by F-box.

## Notable Publications

Author	Pubmed ID	Journal	Application
Wenting Song	36209140	Cell Death Dis	WB,IHC
Yilong Ai	34117688	J Cell Mol Med	WB
Nan Song	28722108	J Cell Physiol	WB

## Storage

## Storage:

Store at -20°C. Stable for one year after shipment.

## Storage Buffer:

PBS with 0.02% sodium azide and 50% glycerol pH 7.3.

Aliquoting is unnecessary for -20°C storage

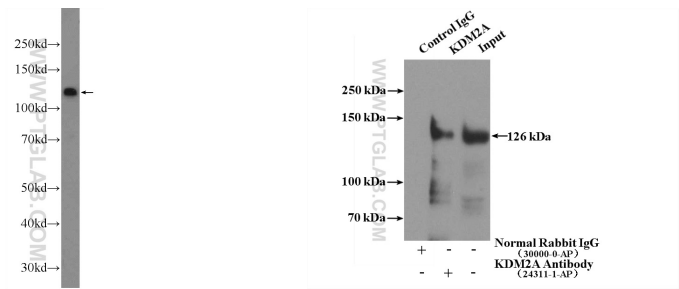
For technical support and original validation data for this product please contact:

T: 4006900926

E: [Proteintech-CN@ptglab.com](mailto:Proteintech-CN@ptglab.com)W: [ptgcn.com](http://ptgcn.com)

This product is exclusively available under Proteintech Group brand and is not available to purchase from any other manufacturer.

Selected Validation Data



Jurkat cells were subjected to SDS PAGE followed by western blot with 24311-1-AP (KDM2A Antibody) at dilution of 1:1000 incubated at room temperature for 1.5 hours.

IP result of anti-KDM2A (IP:24311-1-AP, 4ug; Detection:24311-1-AP 1:600) with HeLa cells lysate 1600ug.