

For Research Use Only

# LIPI Polyclonal antibody

Catalog Number: 24300-1-AP



## Basic Information

<b>Catalog Number:</b> 24300-1-AP	<b>GenBank Accession Number:</b> BC148691	<b>Purification Method:</b> Antigen affinity purification
<b>Size:</b> 800 µg/ml	<b>GeneID (NCBI):</b> 149998	<b>Recommended Dilutions:</b> WB 1:200-1:1000 IHC 1:50-1:500
<b>Source:</b> Rabbit	<b>UNIPROT ID:</b> Q6XZB0	
<b>Isotype:</b> IgG	<b>Full Name:</b> Lipase, member I	
<b>Immunogen Catalog Number:</b> AG19024	<b>Calculated MW:</b> 460 aa, 55 kDa	
	<b>Observed MW:</b> 50 kDa	

## Applications

<b>Tested Applications:</b> IHC, WB, ELISA	<b>Positive Controls:</b> WB: A549 cells, mouse lung tissue IHC: human testis tissue,
<b>Species Specificity:</b> human, mouse	
<b>Note-IHC: suggested antigen retrieval with TE buffer pH 9.0; (*) Alternatively, antigen retrieval may be performed with citrate buffer pH 6.0</b>	

## Background Information

### Storage

**Storage:**  
Store at -20°C. Stable for one year after shipment.  
**Storage Buffer:**  
PBS with 0.02% sodium azide and 50% glycerol pH 7.3.  
Aliquoting is unnecessary for -20°C storage

For technical support and original validation data for this product please contact:

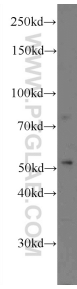
T: 4006900926

E: [Proteintech-CN@ptglab.com](mailto:Proteintech-CN@ptglab.com)

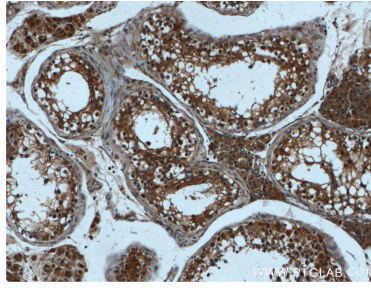
W: [ptgcn.com](http://ptgcn.com)

This product is exclusively available under Proteintech Group brand and is not available to purchase from any other manufacturer.

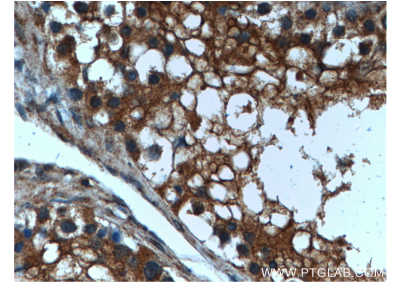
## Selected Validation Data



A549 cells were subjected to SDS PAGE followed by western blot with 24300-1-AP (LIPI Antibody) at dilution of 1:300 incubated at room temperature for 1.5 hours.



Immunohistochemical analysis of paraffin-embedded human testis tissue slide using 24300-1-AP (LIPI antibody) at dilution of 1:200 (under 10x lens).



Immunohistochemical analysis of paraffin-embedded human testis tissue slide using 24300-1-AP (LIPI antibody) at dilution of 1:200 (under 40x lens).