

For Research Use Only

# EFCAB5 Polyclonal antibody

Catalog Number: 24296-1-AP



## Basic Information

<b>Catalog Number:</b> 24296-1-AP	<b>GenBank Accession Number:</b> BC137519	<b>Purification Method:</b> Antigen affinity purification
<b>Size:</b> 1000 µg/ml	<b>GeneID (NCBI):</b> 374786	<b>Recommended Dilutions:</b> WB 1:500-1:2000 IHC 1:20-1:200 IF 1:10-1:100
<b>Source:</b> Rabbit	<b>UNIPROT ID:</b> A4FU69	
<b>Isotype:</b> IgG	<b>Full Name:</b> EF-hand calcium binding domain 5	
<b>Immunogen Catalog Number:</b> AG19274	<b>Calculated MW:</b> 1503 aa, 173 kDa	
	<b>Observed MW:</b> 110 kDa	

## Applications

**Tested Applications:**  
IF/ICC, IHC, WB, ELISA

**Species Specificity:**  
human

**Note-IHC: suggested antigen retrieval with TE buffer pH 9.0; (\*) Alternatively, antigen retrieval may be performed with citrate buffer pH 6.0**

**Positive Controls:**

WB : HepG2 cells, L02 cells

IHC : human liver cancer tissue, human colon tissue, human testis tissue

IF : HepG2 cells,

## Background Information

### Storage

**Storage:**  
Store at -20°C. Stable for one year after shipment.  
**Storage Buffer:**  
PBS with 0.02% sodium azide and 50% glycerol pH 7.3.  
Aliquoting is unnecessary for -20°C storage

For technical support and original validation data for this product please contact:

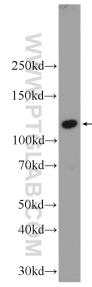
T: 4006900926

E: Proteintech-CN@ptglab.com

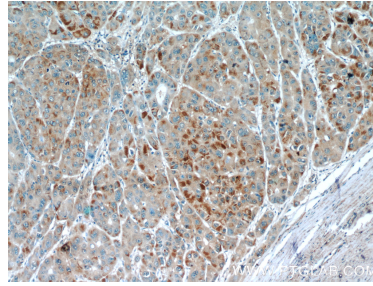
W: ptgcn.com

**This product is exclusively available under Proteintech Group brand and is not available to purchase from any other manufacturer.**

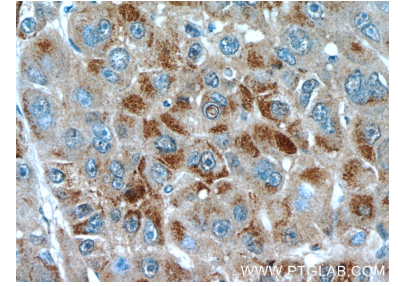
## Selected Validation Data



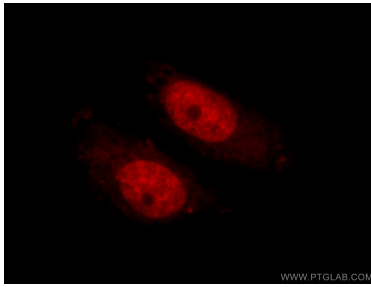
HepG2 cells were subjected to SDS PAGE followed by western blot with 24296-1-AP (EFCAB5 Antibody) at dilution of 1:1000 incubated at room temperature for 1.5 hours.



Immunohistochemical analysis of paraffin-embedded human liver cancer slide using 24296-1-AP (EFCAB5 Antibody) at dilution of 1:50.



Immunohistochemical analysis of paraffin-embedded human liver cancer slide using 24296-1-AP (EFCAB5 Antibody) at dilution of 1:50.



Immunofluorescent analysis of HepG2 cells using 24296-1-AP (EFCAB5 antibody) at dilution of 1:25 and Rhodamine-Goat anti-Rabbit IgG.