

For Research Use Only

PDE11A Polyclonal antibody, PBS Only

Catalog Number: 24287-1-PBS



Basic Information

Catalog Number:

24287-1-PBS

Source:

Rabbit

Isotype:

IgG

Immunogen Catalog Number:

AG16495

GenBank Accession Number:

BC114431

GeneID (NCBI):

50940

UNIPROT ID:

Q9HCR9

Full Name:

phosphodiesterase 11A

Calculated MW:

934 aa, 105 kDa

Observed MW:

66 kDa

Purification Method:

Antigen affinity purification

Applications

Tested Applications:

WB, Indirect ELISA

Species Specificity:

human, mouse, rat

Background Information

PDE11A is a dual-specificity cyclic nucleotide phosphodiesterase that regulates cAMP and cGMP signaling in a tissue-restricted manner, with prominent roles in the endocrine system and brain. By shaping compartmentalized second-messenger signaling, PDE11A controls steroidogenesis, neuronal plasticity, and hormone responsiveness. Genetic alterations in PDE11A underlie adrenal hyperplasia, endocrine dysfunction, and neuropsychiatric phenotypes, highlighting its importance in cyclic nucleotide homeostasis.

Storage

Storage:

Store at -80°C.

The product is shipped with ice packs. Upon receipt, store it immediately at -80°C

Storage Buffer:

PBS only, pH7.3

For technical support and original validation data for this product please contact:

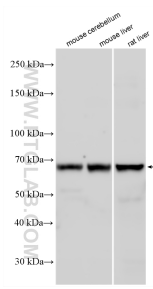
T: 4006900926

E: Proteintech-CN@ptglab.com

W: ptgcn.com

This product is exclusively available under Proteintech Group brand and is not available to purchase from any other manufacturer.

Selected Validation Data



Various lysates were subjected to SDS PAGE followed by western blot with 24287-1-AP (PDE11A antibody) at dilution of 1:600 incubated at room temperature for 1.5 hours. This data was developed using the same antibody clone with 24287-1-PBS in a different storage buffer formulation.