

FBXO28 Polyclonal antibody

Catalog Number: 24282-1-AP

1 Publications

Basic Information

Catalog Number:

24282-1-AP

Size:

550 µg/ml

Source:

Rabbit

Isotype:

IgG

Immunogen Catalog Number:

AG14900

GenBank Accession Number:

BC031576

GeneID (NCBI):

23219

UNIPROT ID:

Q9NVF7

Full Name:

F-box protein 28

Calculated MW:

368 aa, 41 kDa

Observed MW:

42 kDa

Purification Method:

Antigen affinity purification

Recommended Dilutions:

WB 1:500-1:2000

IHC 1:20-1:200

Applications

Tested Applications:

IHC, WB, ELISA

Cited Applications:

IHC

Species Specificity:

human

Cited Species:

human

Note-IHC: suggested antigen retrieval with TE buffer pH 9.0; (*) Alternatively, antigen retrieval may be performed with citrate buffer pH 6.0

Positive Controls:

WB : HEK-293T cells, HeLa cells, PC-3 cells

IHC : human kidney tissue, human breast cancer tissue

Background Information

FBXO28 also named as F box only protein 28 is a 368 amino-acid protein, which contain 1 F-box domain and belongs to F-box protein family. FBXO28 is a critical component of SCF (Skp1-CUL-1-F-box protein) type E3 ubiquitin ligase complex and are involved in substrate recognition and recruitment for ubiquitination. FBXO28 encodes a cell cycle regulated protein with a critical function in tumor cell proliferation. FBXO28 assembles an SCF-FBXO28 ubiquitin ligase whose activity is required during progression through the cell cycle by cyclin-dependent kinase 1/2 mediated phosphorylation. FBXO28 expression and phosphorylation to be strongly associated with poor prognosis and worse overall survival in human breast cancer.

Notable Publications

Author	Pubmed ID	Journal	Application
Xinran Qiao	37596321	Oncogene	IHC

Storage

Storage:

Store at -20°C. Stable for one year after shipment.

Storage Buffer:

PBS with 0.02% sodium azide and 50% glycerol pH 7.3.

Aliquoting is unnecessary for -20°C storage

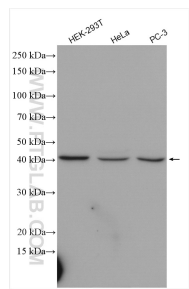
For technical support and original validation data for this product please contact:

T: 4006900926

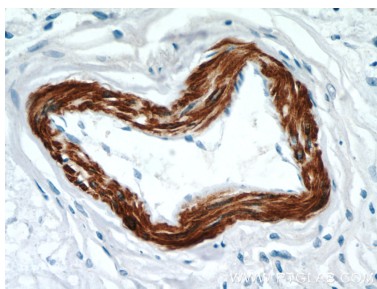
E: Proteintech-CN@ptglab.comW: ptgcn.com

This product is exclusively available under Proteintech Group brand and is not available to purchase from any other manufacturer.

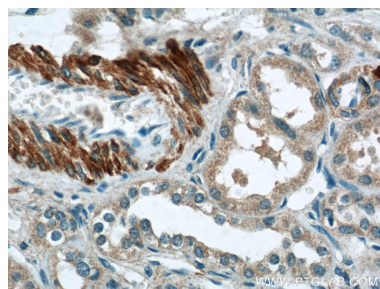
Selected Validation Data



Various lysates were subjected to SDS PAGE followed by western blot with 24282-1-AP (FBXO28 antibody) at dilution of 1:1000 incubated at room temperature for 1.5 hours.



Immunohistochemical analysis of paraffin-embedded human breast cancer tissue slide using 24282-1-AP (FBXO28 Antibody) at dilution of 1:50 (under 40x lens).



Immunohistochemical analysis of paraffin-embedded human kidney tissue slide using 24282-1-AP (FBXO28 Antibody) at dilution of 1:50 (under 40x lens).