

# GJB6 Polyclonal antibody

Catalog Number: 24215-1-AP

## Basic Information

Catalog Number:	24215-1-AP	GenBank Accession Number:	BC038934	Purification Method:	Antigen Affinity purified
Size:	450 µg/ml	GeneID (NCBI):	10804	Recommended Dilutions:	IHC 1:20-1:200
Source:	Rabbit	UNIPROT ID:	O95452		
Isotype:	IgG	Full Name:	gap junction protein, beta 6, 30kDa		
Immunogen Catalog Number:	AG21529	Calculated MW:	261 aa, 30 kDa		

## Applications

Tested Applications:  
IHC, ELISA

Species Specificity:  
human

Positive Controls:

IHC : human oesophagus tissue, human skin cancer tissue

**Note-IHC: suggested antigen retrieval with TE buffer pH 9.0; (\*) Alternatively, antigen retrieval may be performed with citrate buffer pH 6.0**

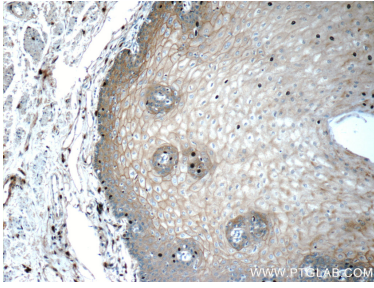
## Background Information

Gap junctions form conduits between adjacent cells that are composed of connexin protein subunits and provide direct intercellular communication pathways allowing rapid exchange of ions and metabolites (PMID: 12126230; 15094343). Connexins are four-pass transmembrane proteins with amino- and carboxy-terminal regions facing the cytoplasm. A connexon is composed of a hexamer of connexins. GJB6 (gap junction beta-6 protein, also known as connexin-30) is a member of the connexin family of proteins. GJB6 is a component of the gap junction networks of the cochlea.

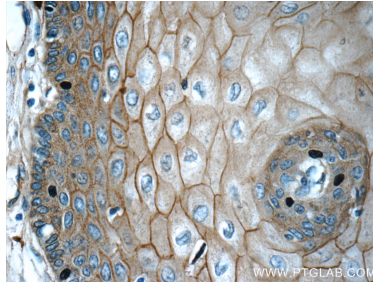
## Storage

Storage:  
Store at -20°C. Stable for one year after shipment.  
Storage Buffer:  
PBS with 0.02% sodium azide and 50% glycerol pH 7.3.  
Aliquoting is unnecessary for -20°C storage

## Selected Validation Data



Immunohistochemical analysis of paraffin-embedded human oesophagus tissue slide using 24215-1-AP (GJB6 Antibody) at dilution of 1:50 (under 10x lens).



Immunohistochemical analysis of paraffin-embedded human oesophagus tissue slide using 24215-1-AP (GJB6 Antibody) at dilution of 1:50 (under 40x lens).