

For Research Use Only

COA6 Polyclonal antibody

Catalog Number: 24209-1-AP

Featured Product

5 Publications



Basic Information

Catalog Number:

24209-1-AP

Concentration:

750 µg/ml

Source:

Rabbit

Isotype:

IgG

Immunogen Catalog Number:

AG21525

GenBank Accession Number:

BC116455

GeneID (NCBI):

388753

UNIPROT ID:

Q5JTJ3

Full Name:

chromosome 1 open reading frame 31

Calculated MW:

125 aa, 14 kDa

Observed MW:

10 - 18 kDa

Purification Method:

Antigen Affinity purified

Recommended Dilutions:

WB 1:500-1:2000

IP 0.5-4.0 µg for 1.0-3.0 mg of total protein lysate

IHC 1:500-1:2000

Applications

Tested Applications:

WB, IHC, IP, ELISA

Cited Applications:

WB, IHC, IF

Species Specificity:

human, mouse

Cited Species:

human

Positive Controls:

WB : HEK-293 cells, mouse liver tissue

IP : HEK-293 cells,

IHC : human kidney tissue,

Note-IHC: suggested antigen retrieval with TE buffer pH 9.0; (*) Alternatively, antigen retrieval may be performed with citrate buffer pH 6.0

Background Information

C1orf31, also known as COA6, is a conserved mitochondrial protein required for respiratory complex IV biogenesis. Recently study reported that C1orf31 is required for maintenance of cytochrome c oxidase (CcO) subunit levels, and has role in the Cu delivery pathway to CcO. Defects in C1orf31 is associated with mitochondrial respiratory chain disease (MRCD). (24549041)

Notable Publications

Author	Pubmed ID	Journal	Application
Alok Ghosh	24549041	Hum Mol Genet	WB
Wenting Liu	39472746	Sci Rep	WB
Liming Zhang	38694039	Heliyon	IHC

Storage

Storage:

Store at -20°C. Stable for one year after shipment.

Storage Buffer:

PBS with 0.02% sodium azide and 50% glycerol pH 7.3.

Aliquoting is unnecessary for -20°C storage

For technical support and original validation data for this product please contact:

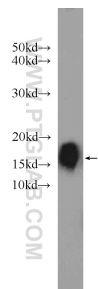
T: 4006900926

E: Proteintech-CN@ptglab.com

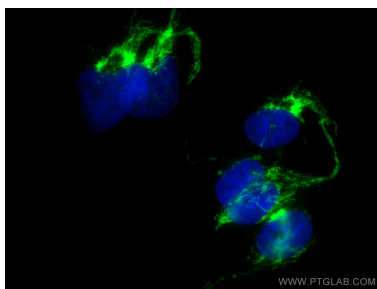
W: ptgcn.com

This product is exclusively available under Proteintech Group brand and is not available to purchase from any other manufacturer.

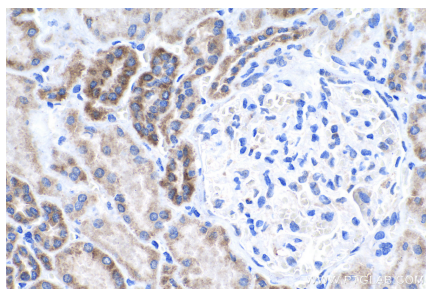
Selected Validation Data



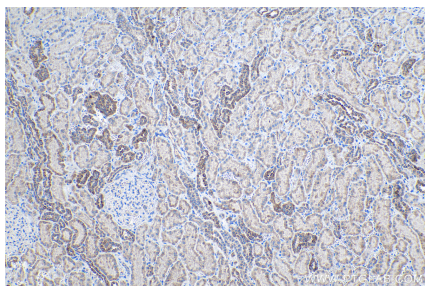
HEK-293 cells were subjected to SDS PAGE followed by western blot with 24209-1-AP (COA6 antibody) at dilution of 1:1000 incubated at room temperature for 1.5 hours.



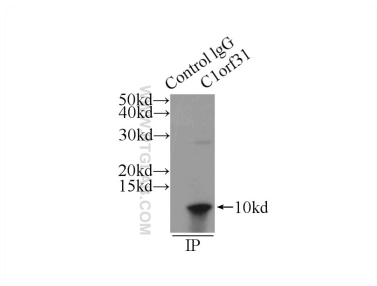
Immunofluorescent analysis of (4% PFA) fixed HEK-293 cells using C1orf31 antibody (24209-1-AP) at dilution of 1:200 and CoraLite®488-Conjugated Goat Anti-Rabbit IgG(H+L).



Immunohistochemical analysis of paraffin-embedded human kidney tissue slide using 24209-1-AP (COA6 antibody) at dilution of 1:1000 (under 40x lens). Heat mediated antigen retrieval with Tris-EDTA buffer (pH 9.0).



Immunohistochemical analysis of paraffin-embedded human kidney tissue slide using 24209-1-AP (COA6 antibody) at dilution of 1:1000 (under 10x lens). Heat mediated antigen retrieval with Tris-EDTA buffer (pH 9.0).



IP result of anti-COA6 (IP:24209-1-AP, 4ug; Detection:24209-1-AP 1:500) with HEK-293 cells lysate 1760ug.