

For Research Use Only

# LUC7L2 Polyclonal antibody

Catalog Number: 24202-1-AP **Featured Product**



## Basic Information

<b>Catalog Number:</b> 24202-1-AP	<b>GenBank Accession Number:</b> BC017163	<b>Purification Method:</b> Antigen Affinity purified
<b>Size:</b> 600 µg/ml	<b>GeneID (NCBI):</b> 51631	<b>Recommended Dilutions:</b> WB 1:500-1:3000 IF 1:50-1:500
<b>Source:</b> Rabbit	<b>UNIPROT ID:</b> Q9Y383	
<b>Isotype:</b> IgG	<b>Full Name:</b> LUC7-like 2 (S. cerevisiae)	
<b>Immunogen Catalog Number:</b> AG21135	<b>Calculated MW:</b> 392 aa, 47 kDa	
	<b>Observed MW:</b> 46 kDa	

## Applications

<b>Tested Applications:</b> IF/ICC, WB, ELISA	<b>Positive Controls:</b> WB : K-562 cells, HeLa cells IF : HeLa cells,
<b>Species Specificity:</b> human	

## Background Information

RNA-binding protein LUC7L2 as a negative regulator of DNA virus-triggered innate immune response. Mechanistically, LUC7L2 directly bound to intron 3 of MITA precursor messenger RNA, inhibited its splicing and promoted its nonsense-mediated decay, leading to its downregulation at protein level (PMID:34155193). Moreover, LUC7L2 as a component of the U1 snRNP capable of reprogramming cellular metabolism through changes in alternative pre-mRNA splicing (PMID:33961773).

## Storage

**Storage:**  
Store at -20°C. Stable for one year after shipment.  
**Storage Buffer:**  
PBS with 0.02% sodium azide and 50% glycerol pH 7.3.  
Aliquoting is unnecessary for -20°C storage

For technical support and original validation data for this product please contact:

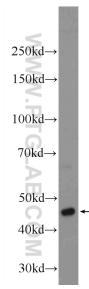
T: 4006900926

E: Proteintech-CN@ptglab.com

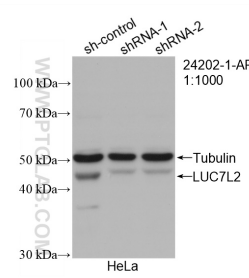
W: ptgcn.com

**This product is exclusively available under Proteintech Group brand and is not available to purchase from any other manufacturer.**

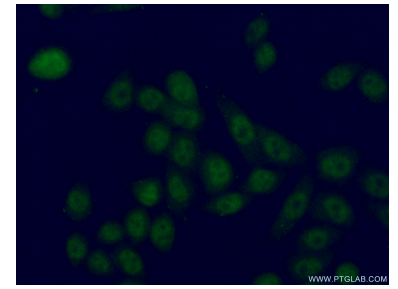
## Selected Validation Data



K-562 cells were subjected to SDS PAGE followed by western blot with 24202-1-AP (LUC7L2 Antibody) at dilution of 1:1500 incubated at room temperature for 1.5 hours.



WB result of LUC7L2 antibody (24202-1-AP; 1:1000; incubated at room temperature for 1.5 hours) with sh-Control and sh-LUC7L2 transfected HeLa cells.



Immunofluorescent analysis of (4% PFA) fixed HeLa cells using 24202-1-AP (LUC7L2 antibody) at dilution of 1:50 and Alexa Fluor 488-conjugated AffiniPure Goat Anti-Rabbit IgG(H+L).