

For Research Use Only

# ATF6 Polyclonal antibody

Catalog Number: 24169-1-AP

Featured Product

319 Publications



## Basic Information

### Catalog Number:

24169-1-AP

### Source:

Rabbit

### Isotype:

IgG

### Immunogen Catalog Number:

AG21456

### GenBank Accession Number:

BC014969

### GeneID (NCBI):

22926

### UNIPROT ID:

P18850

### Full Name:

activating transcription factor 6

### Calculated MW:

75 kDa

### Observed MW:

60-70 kDa, 90-100 kDa

### Purification Method:

Antigen affinity purification

### Recommended Dilutions:

WB: 1:2000-1:10000

IP: 0.5-4.0 ug for 1.0-3.0 mg of total protein lysate

IHC: 1:20-1:200

IF/ICC: 1:200-1:800

FC (Intra): 0.40 ug per 10<sup>6</sup> cells in a 100 µl suspension

## Applications

### Tested Applications:

WB, IHC, IF/ICC, FC (Intra), IP, ELISA

### Cited Applications:

WB, IHC, IF, IP, CoIP

### Species Specificity:

human, mouse, rat

### Cited Species:

human, mouse, rat, pig, monkey, chicken, bovine

**Note-IHC: suggested antigen retrieval with TE buffer pH 9.0; (\*) Alternatively, antigen retrieval may be performed with citrate buffer pH 6.0**

### Positive Controls:

WB: A549 cells, HEK-293 cells, HeLa cells, MCF-7 cells, mouse liver tissue, rat liver, rat liver tissue

IP: HeLa cells,

IHC: human cervical cancer tissue, human breast hyperplasia tissue, human pancreas cancer tissue, human pancreas tissue

IF/ICC: HeLa cells,

FC (Intra): HeLa cells,

## Background Information

Activating transcription factor 6 (ATF6) is a transcription factor that acts during endoplasmic reticulum stress by activating unfolded protein response target genes. Binds DNA on the 5'-CCAC[GA]-3' half of the ER stress response element (ERSE) (5'-CCAAT-N(9)-CCAC[GA]-3') and of ERSE II (5'-ATTGG-N-CCACG-3'). Binding to ERSE requires binding of NF-Y to ERSE. Could also be involved in activation of transcription by the serum response factor. During unfolded protein response an approximative 50 kDa fragment containing the cytoplasmic transcription factor domain is released by proteolysis. The cleavage seems to be performed sequentially by site-1 and site-2 proteases. The fully glycosylated form of ATF6, a 670 amino acid protein, exhibits an electrophoretic mobility of ~90 kDa in denaturing SDS-gels, in part because of the glycosylated modifications. ATF6 has 3 consensus sites for N-linked glycosylation and exists constitutively as a glycosylated protein. Differentially glycosylated ATF6 forms may result from mutations or experimental treatment (PMID:15804611) (PMID:14699159). The antibody recognizes cleaved and fully glycosylated forms of ATF6.

## Notable Publications

Author	Pubmed ID	Journal	Application
Junxia Hu	31580970	Biomed Pharmacother	WB
Jing Sun	34650437	Front Pharmacol	WB
Yingchao Gong	34582847	Eur J Pharmacol	WB

## Storage

### Storage:

Store at -20°C. Stable for one year after shipment.

### Storage Buffer:

PBS with 0.02% sodium azide and 50% glycerol, pH7.3

Aliquoting is unnecessary for -20°C storage

For technical support and original validation data for this product please contact:

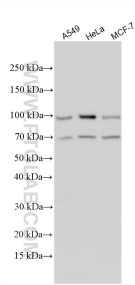
T: 4006900926

E: [Proteintech-CN@ptglab.com](mailto:Proteintech-CN@ptglab.com)

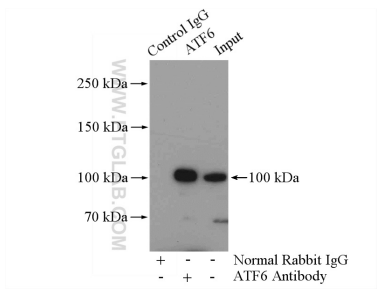
W: [ptgcn.com](http://ptgcn.com)

**This product is exclusively available under Proteintech Group brand and is not available to purchase from any other manufacturer.**

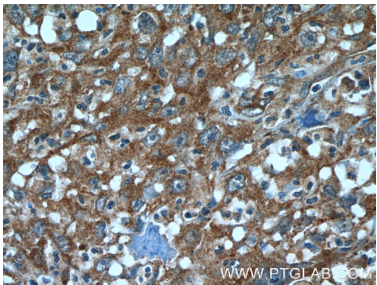
Selected Validation Data



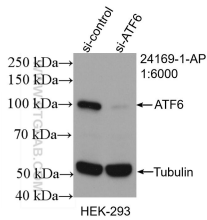
Various lysates were subjected to SDS PAGE followed by western blot with 24169-1-AP (ATF6 antibody) at dilution of 1:5000 incubated at room temperature for 1.5 hours.



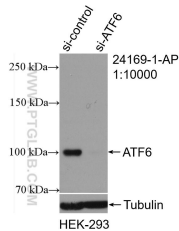
IP result of anti-ATF6 (IP:24169-1-AP, 4ug; Detection:24169-1-AP 1:1500) with HeLa cells lysate 2800ug.



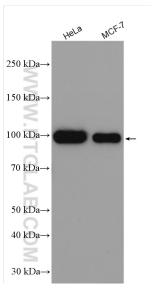
Immunohistochemical analysis of paraffin-embedded human cervical cancer tissue slide using 24169-1-AP (ATF6 Antibody) at dilution of 1:50 (under 40x lens).



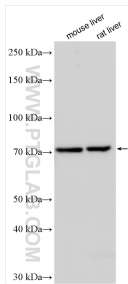
WB result of ATF6 antibody (24169-1-AP; 1:6000; incubated at room temperature for 1.5 hours) with sh-Control and sh-ATF6 transfected HEK-293 cells.



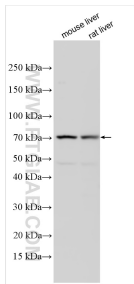
WB result of ATF6 antibody (24169-1-AP; 1:10000; incubated at room temperature for 1.5 hours) with sh-Control and sh-ATF6 transfected HEK-293 cells.



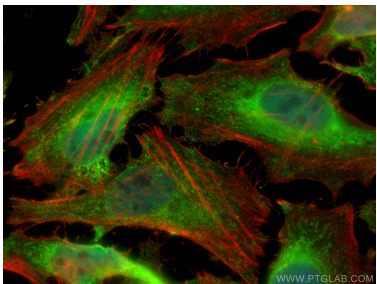
Various lysates were subjected to SDS PAGE followed by western blot with 24169-1-AP (ATF6 antibody) at dilution of 1:7000 incubated at room temperature for 1.5 hours.



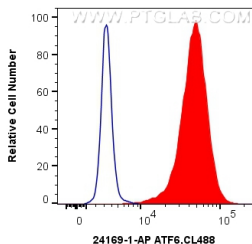
Various lysates were subjected to SDS PAGE followed by western blot with 24169-1-AP (ATF6 antibody) at dilution of 1:8000 incubated at room temperature for 1.5 hours.



Various lysates were subjected to SDS PAGE followed by western blot with 24169-1-AP (ATF6 antibody) at dilution of 1:5000 incubated at room temperature for 1.5 hours.



Immunofluorescent analysis of (4% PFA) fixed HeLa cells using ATF6 antibody (24169-1-AP) at dilution of 1:400 and CoraLite®488-Conjugated AffiniPure Goat Anti-Rabbit IgG(H+L), CL594-phalloidin (red).



1X10<sup>6</sup> HeLa cells were intracellularly stained with 0.4 ug Anti-Human ATF6 (24169-1-AP) and CoraLite®488-Conjugated AffiniPure Goat Anti-Rabbit IgG(H+L) at dilution 1:1000 (red), or 0.4 ug Control Antibody. Cells were fixed with 4% PFA and permeabilized with Intracellular Staining Permeabilization Wash Buffer.