

## CD320 Polyclonal antibody

Catalog Number: 24145-1-AP

## Basic Information

<b>Catalog Number:</b> 24145-1-AP	<b>GenBank Accession Number:</b> BC000668	<b>Purification Method:</b> Antigen Affinity purified
<b>Concentration:</b> 500 ug/ml	<b>GeneID (NCBI):</b> 51293	<b>Recommended Dilutions:</b> WB 1:500-1:3000
<b>Source:</b> Rabbit	<b>UNIPROT ID:</b> Q9NPF0	IHC 1:200-1:800
<b>Isotype:</b> IgG	<b>Full Name:</b> CD320 molecule	IF/ICC 1:200-1:800
<b>Immunogen Catalog Number:</b> AG21445	<b>Calculated MW:</b> 29 kDa	
	<b>Observed MW:</b> 70 kDa	

## Applications

**Tested Applications:**  
WB, IHC, IF/ICC, ELISA

**Species Specificity:**  
human

**Note-IHC: suggested antigen retrieval with TE buffer pH 9.0; (\*) Alternatively, antigen retrieval may be performed with citrate buffer pH 6.0**

**Positive Controls:**

**WB :** HL-60 cells, HeLa cells, K-562 cells, Raji cells, human placenta tissue

**IHC :** human tonsillitis tissue,

**IF/ICC :** Raji cells,

## Background Information

CD320, also known as 8D6, 8D6A or TCbLR, is a single-pass type I membrane protein containing 2 LDL-receptor class A domains. Expressed abundantly on follicular dendritic cells (FDCs), CD320 has been shown to enhance proliferation of germinal center (GC) B cells. It is the receptor for cellular uptake of transcobalamin-bound cobalamin. Defects in CD320 are the cause of methylmalonic aciduria type TCbLR (MMATC). CD320 has a calculated molecular mass of 29 kDa. The apparent molecular weight detected by this antibody is 70 kDa. The aberrant mobility of the protein by SDS-PAGE is probably caused by extensive complex glycosylation (PMID: 18779389; 23415653).

## Storage

**Storage:**

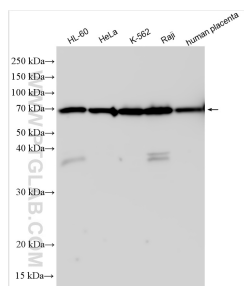
Store at -20°C. Stable for one year after shipment.

**Storage Buffer:**

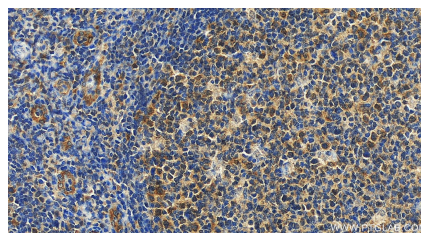
PBS with 0.02% sodium azide and 50% glycerol pH 7.3.

**Aliquoting is unnecessary for -20°C storage**

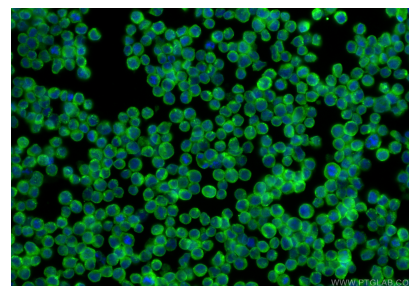
## Selected Validation Data



Various lysates were subjected to SDS PAGE followed by western blot with 24145-1-AP (CD320 antibody) at dilution of 1:1500 incubated at room temperature for 1.5 hours.



Immunohistochemical analysis of paraffin-embedded human tonsillitis tissue slide using 24145-1-AP (CD320 antibody) at dilution of 1:400 (under 20x lens). Heat mediated antigen retrieval with Tris-EDTA buffer (pH 9.0).



Immunofluorescent analysis of (4% PFA) fixed Raji cells using CD320 antibody (24145-1-AP) at dilution of 1:400 and CoraLite®488-Conjugated Goat Anti-Rabbit IgG(H+L) (SA00013-2).