

RPAP1 Polyclonal antibody

Catalog Number: 24116-1-AP

Basic Information

Catalog Number:

24116-1-AP

Size:

1000 µg/ml

Source:

Rabbit

Isotype:

IgG

Immunogen Catalog Number:

AG7856

GenBank Accession Number:

BC000246

GeneID (NCBI):

26015

UNIPROT ID:

Q9BWH6

Full Name:

RNA polymerase II associated protein

1

Calculated MW:

153 kDa

Observed MW:

153 kDa

Purification Method:

Antigen Affinity purified

Recommended Dilutions:

WB 1:2000-1:12000

Applications

Tested Applications:

WB, ELISA

Species Specificity:

human, mouse

Positive Controls:

WB : HEK-293 cells, HeLa cells

Background Information

RNA polymerase II-associated protein 1 (RPAP1) encodes a nuclear 153-kDa protein, and forms an interface between the RNA polymerase II (RNAPII) enzyme and chaperone/scaffolding protein, suggesting that it is required to connect RNA polymerase II to regulators of protein complex formation. RPAP1 is required for interaction of the RNA polymerase II complex with acetylated histone H3 and the subsequent DNA transcription.

Storage

Storage:

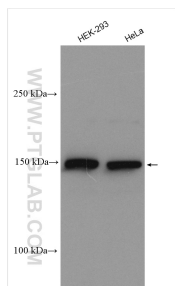
Store at -20°C. Stable for one year after shipment.

Storage Buffer:

PBS with 0.02% sodium azide and 50% glycerol pH 7.3.

Aliquoting is unnecessary for -20°C storage

Selected Validation Data



Various lysates were subjected to SDS PAGE followed by western blot with 24116-1-AP (RPAP1 antibody) at dilution of 1:6000 incubated at room temperature for 1.5 hours.