

For Research Use Only

# FRYL Polyclonal antibody, PBS Only

Catalog Number: 24085-1-PBS



## Basic Information

Catalog Number:

24085-1-PBS

Size:

1 mg/ml

Source:

Rabbit

Isotype:

IgG

Immunogen Catalog Number:

AG21333

GenBank Accession Number:

BC021803

GeneID (NCBI):

285527

UNIPROT ID:

O94915

Full Name:

FRY-like

Calculated MW:

3013 aa, 340 kDa

Observed MW:

340 kDa

Purification Method:

Antigen Affinity purified

## Applications

Tested Applications:

WB, Indirect ELISA

Species Specificity:

human, mouse

## Background Information

FRYL, or FRY-like transcription coactivator, is a protein that belongs to the Furry protein family, which is evolutionarily conserved from yeast to humans. FRYL has almost identical functional domains to the well-characterized Fry protein, which is involved in many processes, including cell polarization, regulation of the actin cytoskeleton, and patterning of sensory neuron dendritic fields (PMID: 34386489). FRYL is a prognostic marker in certain cancers, including Kidney renal clear cell carcinoma, Ovary serous cystadenocarcinoma, and Rectum adenocarcinoma, suggesting its potential role in cancer progression.

## Storage

Storage:

Store at -80°C.

**The product is shipped with ice packs. Upon receipt, store it immediately at -80°C**

Storage Buffer:

PBS Only

For technical support and original validation data for this product please contact:

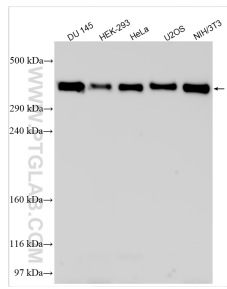
T: 4006900926

E: [Proteintech-CN@ptglab.com](mailto:Proteintech-CN@ptglab.com)

W: [ptgcn.com](http://ptgcn.com)

**This product is exclusively available under Proteintech Group brand and is not available to purchase from any other manufacturer.**

## Selected Validation Data



Various lysates were subjected to SDS PAGE followed by western blot with 24085-1-AP (FRYL antibody) at dilution of 1:1000 incubated at room temperature for 1.5 hours. This data was developed using the same antibody clone with 24085-1-PBS in a different storage buffer formulation.