

For Research Use Only

# CEP120 Polyclonal antibody

Catalog Number: 24067-1-AP



## Basic Information

<b>Catalog Number:</b> 24067-1-AP	<b>GenBank Accession Number:</b> BC040527	<b>Purification Method:</b> Antigen affinity purification
<b>Size:</b> 600 µg/ml	<b>GeneID (NCBI):</b> 153241	<b>Recommended Dilutions:</b> WB 1:1000-1:6000 IHC 1:50-1:500 IF 1:50-1:500
<b>Source:</b> Rabbit	<b>UNIPROT ID:</b> Q8N960	
<b>Isotype:</b> IgG	<b>Full Name:</b> centrosomal protein 120kDa	
<b>Immunogen Catalog Number:</b> AG21165	<b>Calculated MW:</b> 986 aa, 113 kDa	
	<b>Observed MW:</b> 120-130 kDa	

## Applications

**Tested Applications:**  
IF/ICC, IHC, WB, ELISA

**Species Specificity:**  
human, mouse

**Note-IHC: suggested antigen retrieval with TE buffer pH 9.0; (\*) Alternatively, antigen retrieval may be performed with citrate buffer pH 6.0**

**Positive Controls:**

WB : Jurkat cells, mouse lung tissue

IHC : human pancreas tissue,

IF : HeLa cells,

## Background Information

CEP120 encodes a protein that functions in the microtubule-dependent coupling of the nucleus and the centrosome. It is involved in regulating centrosome-mediated interkinetic nuclear migration of neural progenitors (PubMed: 27185865, PubMed: 23857771). CEP120, SPICE1 and CPAP are required for centriole elongation and for recruitment of distal microtubule-capping proteins and CEP135 to procentrioles (PubMed: 23810536). Cep120 and Taccs are required for the neural progenitor pool during mouse neocortical development (PubMed: 17920017).

## Storage

**Storage:**

Store at -20°C. Stable for one year after shipment.

**Storage Buffer:**

PBS with 0.02% sodium azide and 50% glycerol pH 7.3.

Aliquoting is unnecessary for -20°C storage

For technical support and original validation data for this product please contact:

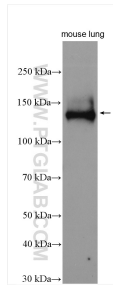
T: 4006900926

E: [Proteintech-CN@ptglab.com](mailto:Proteintech-CN@ptglab.com)

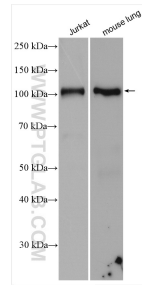
W: [ptgcn.com](http://ptgcn.com)

**This product is exclusively available under Proteintech Group brand and is not available to purchase from any other manufacturer.**

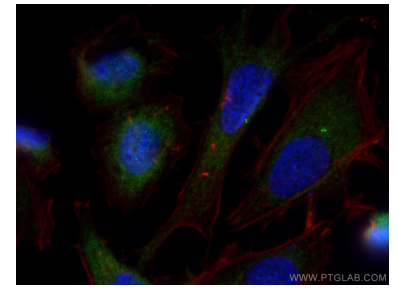
## Selected Validation Data



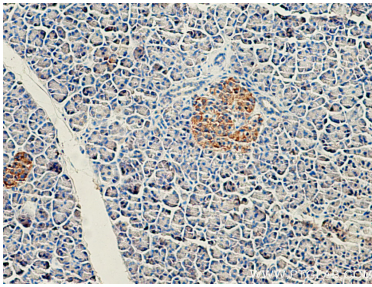
mouse lung tissue were subjected to SDS PAGE followed by western blot with 24067-1-AP (CEP120 antibody) at dilution of 1:1000 incubated at room temperature for 1.5 hours.



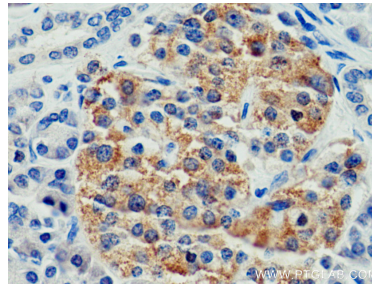
Various lysates were subjected to SDS PAGE followed by western blot with 24067-1-AP (CEP120 antibody) at dilution of 1:3000 incubated at room temperature for 1.5 hours.



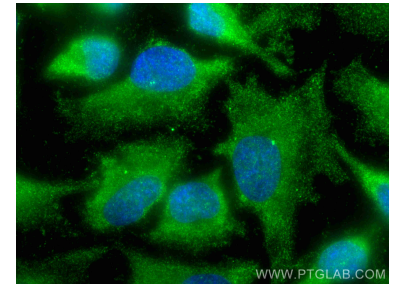
Immunofluorescent analysis of (-20°C Methanol) fixed HeLa cells using CEP120 antibody (24067-1-AP) at dilution of 1:200 and CoraLite®488-Conjugated AffiniPure Goat Anti-Rabbit IgG(H+L), CoraLite®594 Beta Actin antibody (CL594-66009, Clone: 2D4H5, red).



Immunohistochemical analysis of paraffin-embedded human pancreas tissue slide using 24067-1-AP (CEP120 antibody) at dilution of 1:200 (under 10x lens). Heat mediated antigen retrieval with Tris-EDTA buffer (pH 9.0).



Immunohistochemical analysis of paraffin-embedded human pancreas tissue slide using 24067-1-AP (CEP120 antibody) at dilution of 1:200 (under 40x lens). Heat mediated antigen retrieval with Tris-EDTA buffer (pH 9.0).



Immunofluorescent analysis of (-20°C Methanol) fixed HeLa cells using CEP120 antibody (24067-1-AP) at dilution of 1:200 and CoraLite®488-Conjugated AffiniPure Goat Anti-Rabbit IgG(H+L).