

SGF29 Polyclonal antibody

Catalog Number: 24061-1-AP

Featured Product

1 Publications

Basic Information

Catalog Number:

24061-1-AP

Size:

1000 µg/ml

Source:

Rabbit

Isotype:

IgG

Immunogen Catalog Number:

AG21261

GenBank Accession Number:

BC011981

GeneID (NCBI):

112869

UNIPROT ID:

Q96ES7

Full Name:

coiled-coil domain containing 101

Calculated MW:

293 aa, 33 kDa

Observed MW:

33 kDa

Purification Method:

Antigen Affinity purified

Recommended Dilutions:

WB 1:500-1:2000

IHC 1:50-1:800

Applications

Tested Applications:

IHC, WB, ELISA

Cited Applications:

WB

Species Specificity:

human

Cited Species:

human

Note-IHC: suggested antigen retrieval with TE buffer pH 9.0; (*) Alternatively, antigen retrieval may be performed with citrate buffer pH 6.0

Positive Controls:

WB : HeLa cells, MDA-MB-453s cells

IHC : human liver cancer tissue, human cervical cancer tissue

Background Information

SAGA-associated factor 29 (SGF29) is a chromatin reader component of some histone acetyltransferase (HAT) SAGA-type complexes. SGF29 specifically recognizes and binds methylated 'Lys-4' of histone H3 (H3K4me), with a preference for trimethylated form (H3K4me3) (PMID:19103755, PMID:26421618, PMID:21685874, PMID:26578293). Involved in the response to the endoplasmic reticulum (ER) stress by recruiting the SAGA complex to H3K4me, thereby promoting histone H3 acetylation and cell survival (PubMed:23894581). It has a calculated molecular weight of 33 kDa.

Notable Publications

Author	Pubmed ID	Journal	Application
Lingyun Long	34795452	Nature	WB

Storage

Storage:

Store at -20°C. Stable for one year after shipment.

Storage Buffer:

PBS with 0.02% sodium azide and 50% glycerol pH 7.3.

Aliquoting is unnecessary for -20°C storage

For technical support and original validation data for this product please contact:

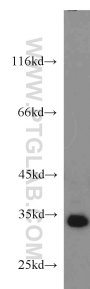
T: 4006900926

E: Proteintech-CN@ptglab.com

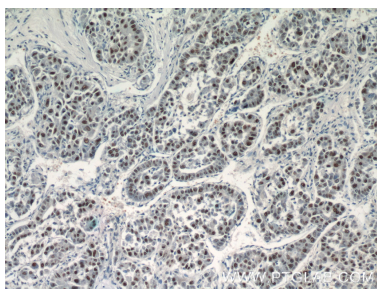
W: ptgcn.com

This product is exclusively available under Proteintech Group brand and is not available to purchase from any other manufacturer.

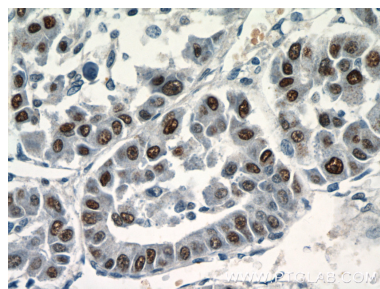
Selected Validation Data



HeLa cells were subjected to SDS PAGE followed by western blot with 24061-1-AP (SGF29 antibody) at dilution of 1:1000 incubated at room temperature for 1.5 hours.



Immunohistochemical analysis of paraffin-embedded human liver cancer tissue slide using 24061-1-AP (SGF29 antibody at dilution of 1:400 (under 10x lens).



Immunohistochemical analysis of paraffin-embedded human liver cancer tissue slide using 24061-1-AP (SGF29 antibody at dilution of 1:400 (under 40x lens).