

For Research Use Only

CFHR2 Polyclonal antibody, PBS Only

Catalog Number: 24048-1-PBS



Basic Information

Catalog Number: 24048-1-PBS	GenBank Accession Number: BC022283	Purification Method: Antigen Affinity purified
Concentration: 1 mg/ml	GeneID (NCBI): 3080	
Source: Rabbit	UNIPROT ID: P36980	
Isotype: IgG	Full Name: complement factor H-related 2	
Immunogen Catalog Number: AG21106	Calculated MW: 270 aa, 31 kDa	
	Observed MW: 30 kDa	

Applications

Tested Applications:
WB, IP, Indirect ELISA

Species Specificity:
human

Background Information

Complement factor H-related protein 2 (CFHR2) is a human immune-related recombinant protein and a member of the family that assists in the activation of the complement system. This protein originates from the filtration membrane of the glomerulus and the lymphatic system, and plays an important role in immune regulation and inflammation suppression.

Storage

Storage:
Store at -80°C.
The product is shipped with ice packs. Upon receipt, store it immediately at -80°C

Storage Buffer:
PBS only, pH7.3

For technical support and original validation data for this product please contact:

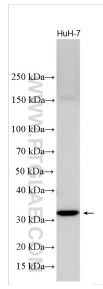
T: 4006900926

E: Proteintech-CN@ptglab.com

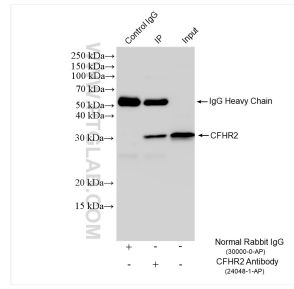
W: ptgcn.com

This product is exclusively available under Proteintech Group brand and is not available to purchase from any other manufacturer.

Selected Validation Data



HuH-7 cells were subjected to SDS PAGE followed by western blot with 24048-1-AP (CFHR2 antibody) at dilution of 1:3000 incubated at room temperature for 1.5 hours. This data was developed using the same antibody clone with 24048-1-PBS in a different storage buffer formulation.



IP result of anti-CFHR2 (IP:24048-1-AP, 4ug; Detection:24048-1-AP 1:1000) with HepG2 cells lysate 1800 ug. This data was developed using the same antibody clone with 24048-1-PBS in a different storage buffer formulation.