

For Research Use Only

# CFHR2 Polyclonal antibody

Catalog Number: 24048-1-AP



## Basic Information

Catalog Number:

24048-1-AP

Concentration:

600 ug/ml

Source:

Rabbit

Isotype:

IgG

Immunogen Catalog Number:

AG21106

GenBank Accession Number:

BC022283

GeneID (NCBI):

3080

UNIPROT ID:

P36980

Full Name:

complement factor H-related 2

Calculated MW:

270 aa, 31 kDa

Observed MW:

30 kDa

Purification Method:

Antigen Affinity purified

Recommended Dilutions:

WB: 1:1000-1:6000

IP: 0.5-4.0 ug for 1.0-3.0 mg of total protein lysate

## Applications

Tested Applications:

WB, IP, ELISA

Species Specificity:

human

Positive Controls:

WB : HuH-7 cells,

IP : HepG2 cells,

## Background Information

Complement factor H-related protein 2 (CFHR2) is a human immune-related recombinant protein and a member of the family that assists in the activation of the complement system. This protein originates from the filtration membrane of the glomerulus and the lymphatic system, and plays an important role in immune regulation and inflammation suppression.

## Storage

Storage:

Store at -20°C. Stable for one year after shipment.

Storage Buffer:

PBS with 0.02% sodium azide and 50% glycerol, pH7.3

Aliquoting is unnecessary for -20°C storage

For technical support and original validation data for this product please contact:

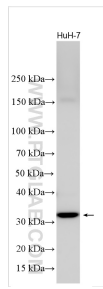
T: 4006900926

E: [Proteintech-CN@ptglab.com](mailto:Proteintech-CN@ptglab.com)

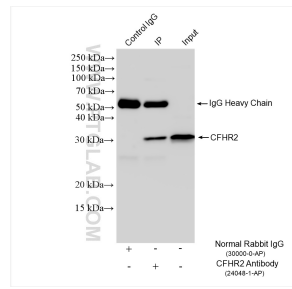
W: [ptgcn.com](http://ptgcn.com)

This product is exclusively available under Proteintech Group brand and is not available to purchase from any other manufacturer.

## Selected Validation Data



HuH-7 cells were subjected to SDS PAGE followed by western blot with 24048-1-AP (CFHR2 antibody) at dilution of 1:3000 incubated at room temperature for 1.5 hours.



IP result of anti-CFHR2 (IP:24048-1-AP, 4ug; Detection:24048-1-AP 1:1000) with HepG2 cells lysate 1800 ug.